

Census 2021

Whitefield Ward Profile

For further information, please visit

www.knowsleyknowledge.org.uk

Census 2021

Whitefield Ward Profile

Contents:

1. Population Growth in Knowsley
2. Diversity In Knowsley
3. Housing in Knowsley
4. Knowsley Offer in Kirkby
4. Whitefield Overview
5. Whitefield Population
6. Who Lives in Whitefield?

Census 2021

Population Growth in Knowsley

155,000
people living in Knowsley

6% increase in Knowsley's
population since 2011

Largest proportional growth
in the Liverpool City Region



Census 2021

Diversity in Knowsley

95.29%

Knowsley's
population are from
White ethnic groups

4.71%

Knowsley's population are
from Asian, Black, Mixed or
other ethnic groups

Since 2011
Increase of 4%
+5,376 people

Since 2011
Increase of 81%
+3,249 people



Census 2021

Diversity in Knowsley

This is the **1st time**
questions on Sexual
Orientation and Gender
Identity have been included
in the Census



Census 2021

Diversity in Knowsley



1.5%
of 16+ residents
identified as **Gay or
Lesbian**



0.1%
of residents
identified as
Pansexual



0.7%
of residents
identified as
Bisexual

64
residents
identified as
Trans Women



86
residents
identified as
Trans Men

In the North West, cities like Liverpool and Manchester have higher populations of residents who identify as Gay or Lesbian

Nationally, 0.1% of the 16+ population identify as being Trans Women and 0.1% of the population identify as being Trans Men



of Knowsley residents aged 16 or over identify as Straight or Heterosexual



More than the North West (90.1%) and England (89.4%) averages

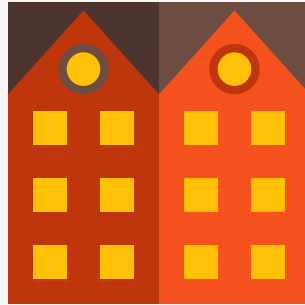
Census 2021

Housing in Knowsley

The number of households in Knowsley has increased by 7.7%, to 66,073 households, an increase of 4,750 households since 2011



43% semi-detached



32% terraced



15% detached



9% flat (or tenement)

Census 2021

Housing in Knowsley

The number of households in Knowsley has increased by 7.7%, to 66,073 households, an increase of 4,750 households since 2011

3 in 5

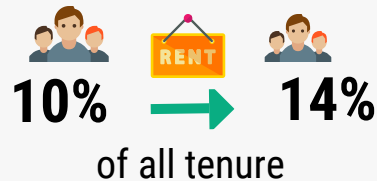


households **own** their property (60%)

Similar to the North-West (62%) and England (61%) averages

Private Rented

accommodation saw the **biggest increase** since 2011



Lower than the North West (19%) and England (21%) averages

Census 2021

Health in Knowsley

76.3% of Knowsley residents describe health as good or very good

9% of Knowsley residents describe health as bad or very bad

Knowsley has the 4th highest proportion of residents who provide **unpaid care** in England



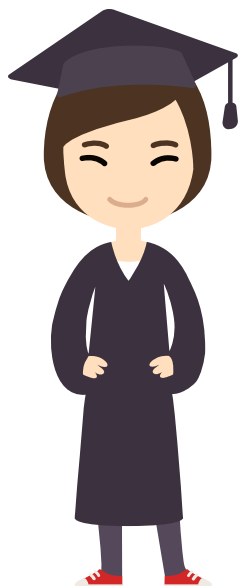
While most adults live happy and healthy lives throughout the Borough, there is a higher proportion of adults that live longer in poor health and with chronic illness and die prematurely. Working age adults in Knowsley are more likely to experience social and economic inequalities compared to the England average, this put adults in Knowsley at greater risk of health inequalities and poor health.



Census 2021

Qualifications in Knowsley

23.7% of adults in Knowsley have a Level 4 qualification - compared to 15.5% in 2011



Increase is greater than LCR which increased by 7% & national levels which increased by 6.6%

Knowsley and the Liverpool City Region LCR have a greater share of residents with no qualifications than average, but this gap is shrinking.

In Knowsley, 26% of adults have no formal qualifications, this is the 6th highest nationally.

Level 4+ qualifications and above: degree (BA, BSc), higher degree (MA, PhD, PGCE), NVQ level 4 to 5, HNC, HND, RSA Higher Diploma, BTEC Higher level, professional qualifications (for example, teaching, nursing, accountancy).



Residents in Kirkby

During August and September 2022, Kirkby residents told us that:

- Their main priorities for the next 5-years is to improve their mental and physical health
- That they experience a number of barriers to achieving their aspirations, including caring responsibilities, finances and their own health
- They are proud to live in Kirkby, especially in a community that 'looks out for each other' and 'knows their neighbours well' with many multi-generational families living within the community.
- They take pride in their family homes, parks and green spaces.
- They are passionate about helping one another, in particular supporting children and families with SEND.

Whitefield: Census 2021

POPULATION



Whitefield has a population of 9,759

- Population size has reduced since 2016, by 1.5%.
- Ward population size is slightly smaller than Knowsley's average.
- Third highest proportion of adults of retirement age.

DIVERSITY



96.1% of Whitefield residents were born in the UK

- Least ethnically diverse Ward - 97% of residents are from White ethnic groups.
- Third highest proportion of residents identifying as Christian (70.4%).

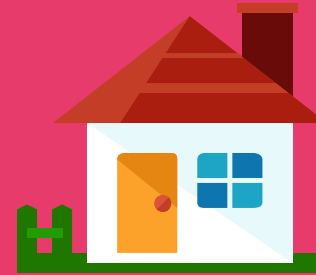
HEALTH & DISABILITY



74.1% of residents have good or very good health

- 10.9% of residents describe their health as bad or very bad - this is the second highest proportion in Knowsley.
- More than 1/4 of residents describe themselves as being disabled.

HOUSEHOLDS



4,299 Households in Whitefield

- 32.8% of households are one-person households
- 27.1% of households are social rented.
- 5% of households are five-person or more.

QUALIFICATIONS & WORK



More than 1 in 6 adults have at least a Level 4 qualification

- Second highest proportion of adults with no qualifications.
- 70.1% are economically active.
- 29.9% are economically inactive.

About Whitefield

This document provides an overview of Whitefield's population mainly using the 2021 Census.

Whitefield's population has remained fairly stable since changes to Knowsley's Ward boundaries in 2016, with a small decrease in population, 1.5% (150 people rounded). Changes in the population of Whitefield are more gradual than Knowsley overall.

Key challenges in Whitefield are around poverty, qualifications and health, particularly supporting residents to 'age well' and maintain their independence.

- Whitefield is among the 20% most deprived wards nationally on the indices of multiple deprivation from 2019.
- 39.3% of children in Whitefield experience child poverty (17.1% nationally), and 32.1% of older people experience poverty (14.2% nationally)
- Life expectancy for women is 78.8 years (83.2 nationally) and for men life expectancy is 75.7 years (79.5 nationally).

Whitefield: Census 2021

9,759 people live in the Whitefield Ward

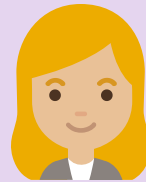
- Since Ward boundary changes in 2016, the total size of Whitefield's population has decreased by 1.5% (estimated at 9,908 in 2016).
- The proportions of young people, working age people and those aged 65 and older living in Whitefield differ slightly from Knowsley's overall demographic. There are slightly more residents of retirement age living in Whitefield - ranking third out of the wards for the largest proportion of residents aged 65+. This corresponds with a slightly lower proportion of working-age adults.

- Whitefield
- Population
- National Identity
- Religion
- Ethnicity
- Health
- Households
- Qualifications
- Work



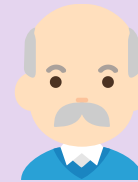
22.3%

of residents are aged 0
to 19 years old



57.7%

of residents are aged 20
-64 years old



20.0%

of residents are aged
65+ years old

Whitefield: Country of Birth



- [Whitefield](#)
- [Population](#)
- [National Identity](#)
- [Religion](#)
- [Ethnicity](#)
- [Health](#)
- [Households](#)
- [Qualifications](#)
- [Work](#)



- 96.1% of Whitefield's population were born in the UK.
- 1.6% were born elsewhere but have lived in the UK for 10 years or more.
- 0.8% of the population have lived in the UK for less than 2-years

Top Countries of Birth among Whitefield residents:



England



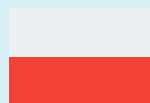
Romania



Brazil



Ireland



Poland



Lithuanian



Britain*



Russia

* Wales, Scotland and Northern Ireland have been grouped together

Whitefield: Religions



- Whitefield
- Population
- National Identity
- Religion
- Ethnicity
- Health
- Households
- Qualifications
- Work



70.4% of Whitefield's population identify as being Christian - slightly more than the Knowsley overall of 66%. Knowsley has the highest proportion of people who identify as Christian in England & Wales.



24.5% of Whitefield's population identify as having no religion. This group of people has increased the most since 2011 across Knowsley.



Islam is the second most followed religion in Whitefield - 0.5% of the population identified as being Muslim (53 people). Very few residents identified with as following the other primary religions in this Ward.

4.3% of people did not provide an answer to this Census question

Whitefield: Ethnicity

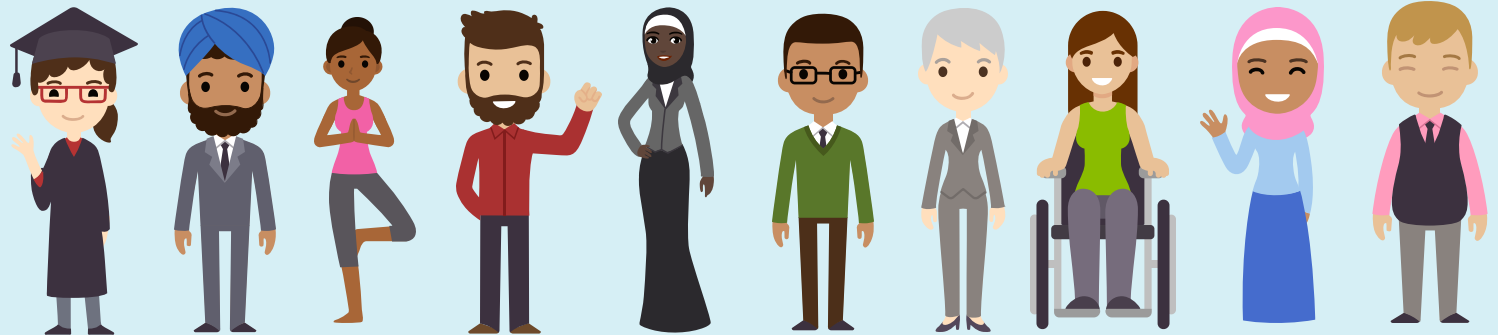


Since 2011, there has been an increase of 81% in the number of Knowsley residents from Asian, Black, Mixed or other ethnic groups

In Whitefield:

- 97.0% of residents are from White ethnic groups - this is the highest proportion out of all the Wards in the borough.
- 0.5% are from Asian, Asian British or Asian Welsh Backgrounds.
- 1.4% are from Mixed or Multiple ethnic groups.
- 0.4% are from Black, Black British, Black Welsh, Caribbean or African ethnic groups.
- 0.7% are from Other ethnic groups.

- Whitefield
- Population
- National Identity
- Religion
- Ethnicity
- Health
- Households
- Qualifications
- Work



Health & Disability



- Whitefield
- Population
- National Identity
- Religion
- Ethnicity
- Health
- Households
- Qualifications
- Work

74.06%

of Whitefield residents describe their health as good or very good

10.89%

of Whitefield residents describe their health as bad or very bad

25.37%

of Whitefield residents describe themselves as being disabled

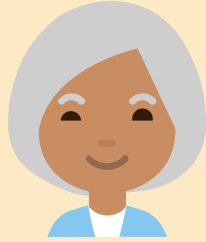
1,057

Whitefield residents provide unpaid care, with 407 residents stating that they provide 50+ hours per week of unpaid care.

Health & Disability



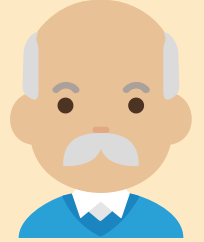
- Whitefield
- Population
- National Identity
- Religion
- Ethnicity
- Health
- Households
- Qualifications
- Work



Life Expectancy in Whitefield

78.8 years for women (83.2 years nationally)

75.7 years for men (79.5 years nationally)



Overall, a higher proportion of residents in Whitefield describe their health as being bad or very bad, compared to the national averages.

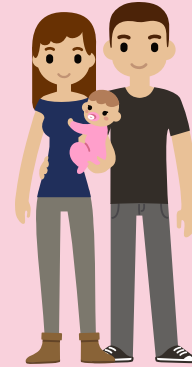
Health data shows us that there is higher prevalence of all cancers (especially lung cancer), heart disease and respiratory diseases.

Whitefield: Households

4,299 households in Whitefield



32.8% are one-person households



18.4% are three-person households



31.8% are two-person households



12.2% are four-person households

5.0% are five+ person households

- Whitefield
- Population
- National Identity
- Religion
- Ethnicity
- Health
- Households
- Qualifications
- Work

Whitefield: Households



4,299 households in Whitefield



56.2% are owned outright or with a mortgage



14.8% are privately rented



27.1% are social rented

- Whitefield
- Population
- National Identity
- Religion
- Ethnicity
- Health
- Households
- Qualifications
- Work

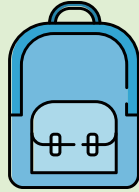
Whitefield has more homes that are social rented compared to national levels, (17%) and less homes that are owned than national levels (62.5%).

The Median price of homes in Whitefield has increased from £106,000 in 2011 to £136,500 in 2021. This is a 28.78% increase, the second slowest rate of increase in the borough, behind St Gabriel's.

Whitefield: Qualifications



- Whitefield
- Population
- National Identity
- Religion
- Ethnicity
- Health
- Households
- Qualifications
- Work



31.7% of Whitefield residents have no qualifications



11.4% have Level 1 qualifications

14.2% have Level 2 qualifications

16.3% have Level 3 qualifications



18.6% have level 4 qualifications or above

Nationally, Level 4 qualifications are the most common with 33.8% of residents. The second most common category was no qualifications with 18.2%.

Whitefield: Work

70.1% Economically
Active

of whom 5.1% are
unemployed



29.9% Economically
Inactive

Nationally, 75.4% of the
population are
economically active

of whom 4.4% are
unemployed

24.6% are economically
inactive



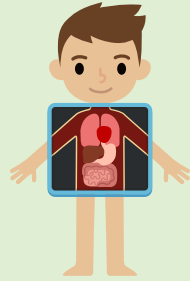
Based on those aged 16 to 64 years



- Whitefield
- Population
- National Identity
- Religion
- Ethnicity
- Health
- Households
- Qualifications
- Work

Whitefield: Work

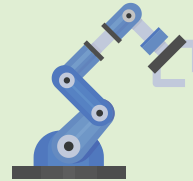
Top 5 Industries for Whitefield Residents



732 residents work in human health & social work activities



681 residents work in wholesale & retail trade



340 residents work in manufacturing



412 residents work in construction



314 residents work in education



- Whitefield
- Population
- National Identity
- Religion
- Ethnicity
- Health
- Households
- Qualifications
- Work

Whitefield: Work

1,812 (29.9%) of residents are economically inactive

Top 4 reasons for being economically inactive:



2.7% are retired



10.7% are long-term sick or disabled



4.9% are students



6% looking after family or home

Based on those aged 16 to 64 years



- Whitefield
- Population
- National Identity
- Religion
- Ethnicity
- Health
- Households
- Qualifications
- Work

For more information on Knowsley please visit
Knowsley Knowledge website

