

Census 2021

Whiston & Cronton Ward Profile

For further information, please visit

www.knowsleyknowledge.org.uk

Census 2021

Whiston and Cronton Ward Profile

Contents:

1. Population Growth in Knowsley
2. Diversity In Knowsley
3. Housing in Knowsley
4. Knowsley Offer in Whiston and Cronton
5. Whiston and Cronton Overview
6. Whiston and Cronton Population
7. Who Lives in Whiston and Cronton?

Census 2021

Population Growth in Knowsley

155,000
people living in Knowsley

6% increase in Knowsley's
population since 2011

Largest proportional growth
in the Liverpool City Region



Census 2021

Diversity in Knowsley

95.29%

Knowsley's
population are from
White ethnic groups

4.71%

Knowsley's population are
from Asian, Black, Mixed or
other ethnic groups

Since 2011
Increase of 4%
+5,376 people

Since 2011
Increase of 81%
+3,249 people



Census 2021

Diversity in Knowsley

This is the **1st time**
questions on Sexual
Orientation and Gender
Identity have been included
in the Census



Census 2021

Diversity in Knowsley



1.5%
of 16+ residents
identified as **Gay or
Lesbian**



0.1%
of residents
identified as
Pansexual



0.7%
of residents
identified as
Bisexual

64
residents
identified as
Trans Women



86
residents
identified as
Trans Men

In the North West, cities like Liverpool and Manchester have higher populations of residents who identify as Gay or Lesbian

Nationally, 0.1% of the 16+ population identify as being Trans Women and 0.1% of the population identify as being Trans Men



of Knowsley residents aged 16 or over identify as Straight or Heterosexual



More than the North West (90.1%) and England (89.4%) averages

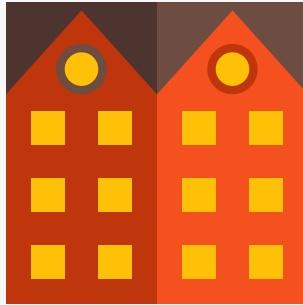
Census 2021

Housing in Knowsley

The number of households in Knowsley has increased by 7.7%, to 66,073 households, an increase of 4,750 households since 2011



43% semi-detached



32% terraced



15% detached



9% flat (or tenement)

Census 2021

Housing in Knowsley

The number of households in Knowsley has increased by 7.7%, to 66,073 households, an increase of 4,750 households since 2011

3 in 5

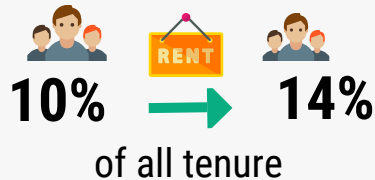


households **own** their property (60%)

Similar to the North-West (62%) and England (61%) averages

Private Rented

accommodation saw the **biggest increase** since 2011



Lower than the North West (19%) and England (21%) averages

Census 2021

Health in Knowsley

76.3% of Knowsley residents describe health as good or very good

9% of Knowsley residents describe health as bad or very bad



Knowsley has the 4th highest proportion of residents who provide **unpaid care** in England

While most adults live happy and healthy lives throughout the Borough, there is a higher proportion of adults that live longer in poor health and with chronic illness and die prematurely. Working age adults in Knowsley are more likely to experience social and economic inequalities compared to the England average, this put adults in Knowsley at greater risk of health inequalities and poor health.



Census 2021

Qualifications in Knowsley

23.7% of adults in Knowsley have a Level 4 qualification - compared to 15.5% in 2011

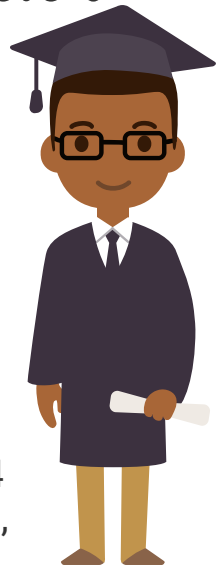


Increase is greater than LCR which increased by 7% & national levels which increased by 6.6%

Knowsley and the Liverpool City Region LCR have a greater share of residents with no qualifications than average, but this gap is shrinking.

In Knowsley, 26% of adults have no formal qualifications, this is the 6th highest nationally.

Level 4+ qualifications and above: degree (BA, BSc), higher degree (MA, PhD, PGCE), NVQ level 4 to 5, HNC, HND, RSA Higher Diploma, BTEC Higher level, professional qualifications (for example, teaching, nursing, accountancy).



Residents in Whiston and Cronton

During August and September 2022, Whiston and Cronton residents told us that:

- Their main priorities for the next 5-years is to improve their mental and physical health
- That they experience a number of barriers to achieving their aspirations, including caring responsibilities, finances and their own health
- They are proud to live here, especially in a community that 'looks out for each other' and 'knows their neighbours well' with many multi-generational families living within the community.
- They take pride in their family homes, parks and green spaces.
- They are passionate about helping one another, in particular supporting children and families with SEND.

Whiston and Cronton: Census 2021

POPULATION



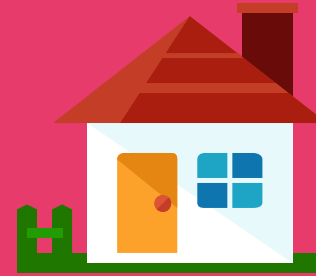
DIVERSITY



HEALTH & DISABILITY



HOUSEHOLDS



QUALIFICATIONS & WORK



Whiston and Cronton has a population of 9,079

- Smallest ward in Knowsley by population size.
- Population size has reduced slightly since 2016.
- 1 in 5 residents are of retirement age (65+).

96.5% of Whiston and Cronton residents were born in the UK

- High proportion of Christians living in Whiston and Cronton.
- Ethnic diversity has increased.

76.5% of residents have good or very good health

- Female life expectancy is highest in Whiston and Cronton - 84.6 years.
- 8.1% of residents describe their health as being bad or very bad.

4,622 Households in Whiston and Cronton

- 31.7% of households are one-person households
- 2/3 of households own their home outright or with a mortgage.

One in five adults have at least a Level 4 qualification

- 72.2% are economically active
- 27.8% are economically inactive: second highest proportion of students and third highest proportion retired.

About Whiston and Cronton

This document provides an overview of Whiston and Cronton's population mainly using the 2021 Census.

Whiston and Cronton's population has decreased since changes to Knowsley's Ward boundaries in 2016 and is now the smallest Ward in the Borough by population size. We expect the population to grow in size due to the new housing developments across Halsnead Garden Village. Whiston and Cronton typically has an older population and we expect to changes to the demographic with more families and young people moving into the area.

A key priority for services in Whiston and Cronton is supporting residents to 'age well' and maintain their independence.

- Whiston and Cronton is one of the least deprived Wards in Knowsley, but does rank between 20% and 40% of the most deprived wards nationally - based on the indices of multiple deprivation from 2019.
- 25.8% of children in Whiston and Cronton experience child poverty (17.1% nationally), and 20.4% of older people experience poverty (14.2% nationally).
- Life expectancy for women is 84.6 years (83.2 nationally) and for men life expectancy is 78.1 years (79.5 nationally).

Whiston and Cronton: Census 2021



- Whiston and Cronton
- Population
- National Identity
- Religion
- Ethnicity
- Health
- Households
- Qualifications
- Work

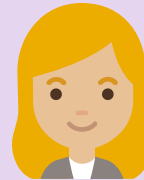
9,079 people live in the Whiston and Cronton Ward

- Since Ward boundary changes in 2016, the total size of Whiston and Cronton's population has reduced by approximately 1.6% - a reduction of around 140 people.
- This means that Whiston and Cronton is now the smallest Ward by population size.
- In terms of age structure of the population, 1 in 5 residents (20%) in Whiston and Cronton are of retirement age (65+). This is higher than average in Knowsley, with the average being 17%.



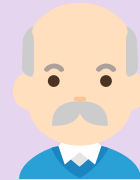
23.2%

of residents are aged 0
to 19 years old



56.4%

of residents are aged 20
-64 years old



20.4%

of residents are aged
65+ years old

Whiston and Cronton: Country of Birth



- Whiston and Cronton
- Population
- National Identity
- Religion
- Ethnicity
- Health
- Households
- Qualifications
- Work



- 96.5% of Whiston and Cronton's population were born in the UK.
- 1.9% were born elsewhere but have lived in the UK for 10 years or more.
- 0.5% of the population have lived in the UK for less than 2 years.

Top Countries of Birth among Whiston and Cronton residents:



England



Ireland



Britain*



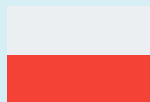
Germany



India



Philippines



Poland



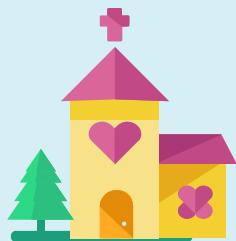
Romanian

* Wales, Scotland and Northern Ireland have been grouped together

Whiston and Cronton: Religions



- Whiston and Cronton
- Population
- National Identity
- Religion
- Ethnicity
- Health
- Households
- Qualifications
- Work



68.95% of Cherryfield's population identify as being Christian - slightly more than the Knowsley overall 66%. Knowsley has the highest proportion of people who identify as Christian in England & Wales.



25.59% of Cherryfield's population identify as having no religion. This group of people has increased the most since 2011 across Knowsley.



0.12% of Cherryfield's population identify as being Buddhist

4.46% of people did not provide an answer to this Census question

Whiston and Cronton: Ethnicity



Since 2011, there has been an increase of 81% in the number of Knowsley residents from Asian, Black, Mixed or other ethnic groups

In Whiston and Cronton:

- 96% of residents are from White ethnic groups
- 1.4% are from Asian, Asian British or Asian Welsh Backgrounds
- 1.7% are from Mixed or Multiple ethnic groups
- 0.6% are from Black, Black British, Black Welsh, Caribbean or African ethnic groups
- 0.4% are from Other ethnic groups.

- Whiston and Cronton
- Population
- National Identity
- Religion
- Ethnicity
- Health
- Households
- Qualifications
- Work



Health & Disability



- Whiston and Cronton
- Population
- National Identity
- Religion
- Ethnicity
- Health
- Households
- Qualifications
- Work

76.45%

of Whiston and Cronton residents describe their health as good or very good

8.08%

of Whiston and Cronton residents describe their health as bad or very bad

23.28%

of Whiston and Cronton residents describe themselves as being disabled

1,075

Whiston and Cronton residents provide unpaid care, with 371 residents stating that they provide 50+ hours per week of unpaid care.

Health & Disability



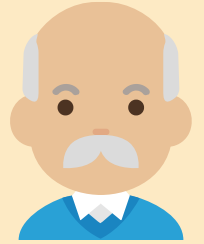
- Whiston and Cronton
- Population
- National Identity
- Religion
- Ethnicity
- Health
- Households
- Qualifications
- Work



Life Expectancy in Whiston and Cronton

84.6 years for women (83.2 years nationally)

78.1 years for men (79.5 years nationally)



Overall, a higher proportion of residents in Whiston and Cronton describe their health as being bad or very bad, compared to the national averages.

Health data shows us that there is a similar prevalence of all cancers (although a higher prevalence for lung cancer) and respiratory diseases. However, there is a higher prevalence for heart disease .

Whiston and Cronton: Households



4,622 households in Whiston and Cronton



31.7% are one-person households



17.2% are three-person households



32.7% are two-person households

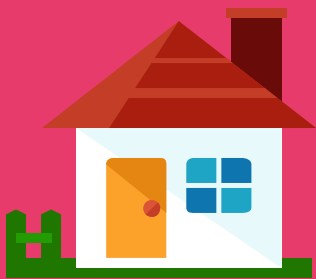


11.8% are four-person households

6.8% are five+ person households

- Whiston and Cronton
- Population
- National Identity
- Religion
- Ethnicity
- Health
- Households
- Qualifications
- Work

Whiston and Cronton: Households



- Whiston and Cronton
- Population
- National Identity
- Religion
- Ethnicity
- Health
- Households
- Qualifications
- Work

4,622 households in Whiston and Cronton



66% are owned outright or with a mortgage



13% are privately rented



21% are social rented

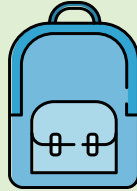
Whiston and Cronton has more homes that are social rented compared to national levels (17%) and more homes that are owned than national levels (62.5%).

Average price of homes in Whiston and Cronton in 2022 was £159,000 from an average of £104,000 in 2011. The cost of homes in Whiston and Cronton have risen more slowly than other parts of Knowsley. The new Halsnead Garden Village in Whiston and Cronton will bring approximately 1,600 new homes to the ward.



Whiston and Cronton: Qualifications

- Whiston and Cronton
- Population
- National Identity
- Religion
- Ethnicity
- Health
- Households
- Qualifications
- Work



24.7% of Whiston and Cronton residents have no qualifications



11.1% have Level 1 qualifications
15.6% have Level 2 qualifications
16.9% have Level 3 qualifications



23.2% have level 4 qualifications or above

Nationally, Level 4 qualifications are the most common with 33.8% of residents. The second most common category was no qualifications with 18.2%.

Whiston and Cronton: Work



- Whiston and Cronton
- Population
- National Identity
- Religion
- Ethnicity
- Health
- Households
- Qualifications
- Work

72.2% Economically Active

of whom 3.9% are unemployed



27.8% Economically Inactive

Nationally, 75.4% of the population are economically active

of whom 4.4% are unemployed

24.6% are economically inactive



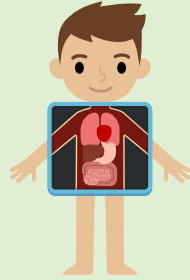
Based on those aged 16 to 64 years

Whiston and Cronton: Work



Top 5 Industries for Whiston and Cronton Residents

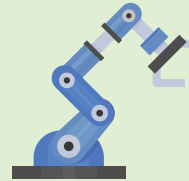
- Whiston and Cronton
- Population
- National Identity
- Religion
- Ethnicity
- Health
- Households
- Qualifications
- Work



847 residents work in human health & social work activities



626 residents work in wholesale & retail trade



306 residents work in manufacturing



346 residents work in construction



341 residents work in education

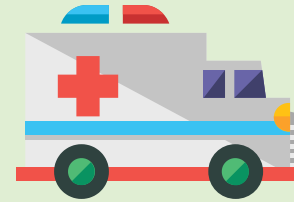
Whiston and Cronton: Work

1,535 (27.8%) of residents are economically inactive

Top 4 reasons for being economically inactive:



3.4% are retired



7.8% are long-term sick or disabled



6% are students



5.9% looking after family or home

Based on those aged 16 to 64 years



- Whiston and Cronton
- Population
- National Identity
- Religion
- Ethnicity
- Health
- Households
- Qualifications
- Work

For more information on Knowsley please visit
Knowsley Knowledge website

