

Census 2021

Swanside Ward Profile

For further information, please visit

www.knowsleyknowledge.org.uk

Census 2021

Swanside Ward Profile

Contents:

1. Population Growth in Knowsley
2. Diversity In Knowsley
3. Housing in Knowsley
4. Knowsley Offer in Huyton
4. Swanside Overview
5. Swanside Population
6. Who Lives in Swanside?

Census 2021

Population Growth in Knowsley

155,000
people living in Knowsley

6% increase in Knowsley's
population since 2011

Largest proportional growth
in the Liverpool City Region



Census 2021

Diversity in Knowsley

95.29%

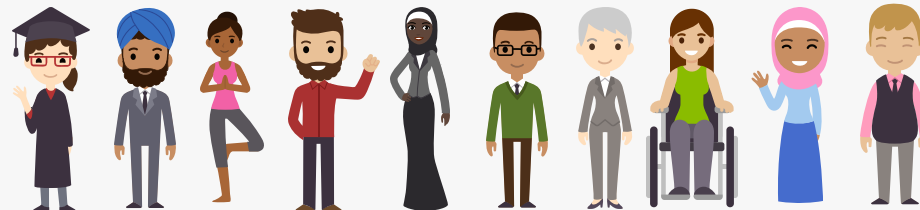
Knowsley's
population are from
White ethnic groups

4.71%

Knowsley's population are
from Asian, Black, Mixed or
other ethnic groups

Since 2011
Increase of 4%
+5,376 people

Since 2011
Increase of 81%
+3,249 people



Census 2021

Diversity in Knowsley

This is the **1st time**
questions on Sexual
Orientation and Gender
Identity have been included
in the Census



Census 2021

Diversity in Knowsley



1.5%
of 16+ residents
identified as **Gay or
Lesbian**



0.1%
of residents
identified as
Pansexual



0.7%
of residents
identified as
Bisexual

64
residents
identified as
Trans Women



86
residents
identified as
Trans Men

In the North West, cities like Liverpool and Manchester have higher populations of residents who identify as Gay or Lesbian

Nationally, 0.1% of the 16+ population identify as being Trans Women and 0.1% of the population identify as being Trans Men



of Knowsley residents aged 16 or over identify as Straight or Heterosexual



More than the North West (90.1%) and England (89.4%) averages

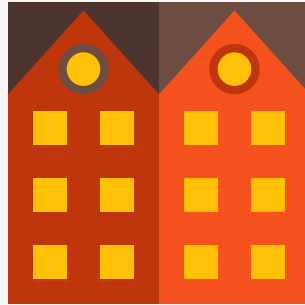
Census 2021

Housing in Knowsley

The number of households in Knowsley has increased by 7.7%, to 66,073 households, an increase of 4,750 households since 2011



43% semi-detached



32% terraced



15% detached



9% flat (or tenement)

Census 2021

Housing in Knowsley

The number of households in Knowsley has increased by 7.7%, to 66,073 households, an increase of 4,750 households since 2011

3 in 5

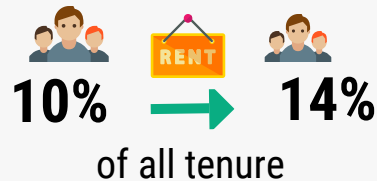


households **own** their property (60%)

Similar to the North-West (62%) and England (61%) averages

Private Rented

accommodation saw the **biggest increase** since 2011



Lower than the North West (19%) and England (21%) averages

Census 2021

Health in Knowsley

76.3% of Knowsley residents describe health as good or very good

9% of Knowsley residents describe health as bad or very bad



Knowsley has the 4th highest proportion of residents who provide **unpaid care** in England

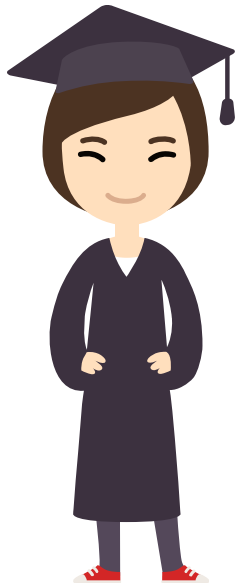
While most adults live happy and healthy lives throughout the Borough, there is a higher proportion of adults that live longer in poor health and with chronic illness and die prematurely. Working age adults in Knowsley are more likely to experience social and economic inequalities compared to the England average, this put adults in Knowsley at greater risk of health inequalities and poor health.



Census 2021

Qualifications in Knowsley

23.7% of adults in Knowsley have a Level 4 qualification - compared to 15.5% in 2011



Increase is greater than LCR which increased by 7% & national levels which increased by 6.6%

Knowsley and the Liverpool City Region LCR have a greater share of residents with no qualifications than average, but this gap is shrinking.

In Knowsley, 26% of adults have no formal qualifications, this is the 6th highest nationally.

Level 4+ qualifications and above: degree (BA, BSc), higher degree (MA, PhD, PGCE), NVQ level 4 to 5, HNC, HND, RSA Higher Diploma, BTEC Higher level, professional qualifications (for example, teaching, nursing, accountancy)



Residents in Huyton

During August and September 2022, residents from across Huyton told us that:

- Their main priorities for the next 5-years is to improve their mental and physical health.
- Local events were highly praised for bringing communities together, post-COVID.
- They are proud to live in Huyton, especially in a community that 'looks out for each other' and 'knows their neighbours well' with many multi-generational families living within the community.
- They take pride in their family homes, parks and green spaces.
- Family, youth, community centres, groups and events were raised as an important part of the community
- Young people have limitless aspirations, with ambitions from young people including becoming the next Prime Minister, a dancer, international photographer, teacher.

Swanside: Census 2021

POPULATION



Swanside has a population of 9,376

- Third smallest Ward by population size in Knowsley.
- Population size has increased by 3% since 2016.

DIVERSITY



96.7% of Swanside residents were born in the UK

- 71.8% of residents identify as Christian.
- Ethnic diversity has increased.
- 95.8% of residents are from White ethnic groups.

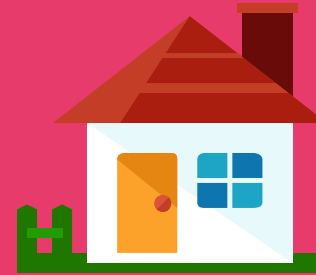
HEALTH & DISABILITY



76.49% of residents have good or very good health

- Life expectancy is longer in Swanside. Second longest in Knowsley, after Roby (Male) and Whiston and Cronton (Female).
- Lowest proportion of residents reporting to have bad or very bad health.

HOUSEHOLDS



3,864 Households in Swanside

- Highest proportion of 4-person households.
- 83.1% of households are owned outright or with a mortgage.
- Lowest proportion of social rented households.

QUALIFICATIONS & WORK



More than 1 in 4 adults have at least a Level 4 qualification

- 81.1% are economically active. Highest proportion in Knowsley.
- 18.9% are economically inactive. Lowest proportion in Knowsley.

About Swanside

This document provides an overview of Swanside's population mainly using the 2021 Census.

Swanside's population has remained fairly stable since changes to Knowsley's Ward boundaries in 2016, with a 3% increase (just under 300 people). Like much of Knowsley we can see changes in the population with more diversity and more families living in Swanside.

Key priorities are supporting residents to 'live and age well'. Swanside residents benefit from having some of the best outcomes in Knowsley, areas of need may be less obvious compared to the other parts of the borough but some residents may still need support, particularly as the population ages.

- Swanside is among the 40% most deprived wards nationally based on the indices of multiple deprivation (IMD) from 2019.
- 12.8% of children in Swanside experience child poverty (17.1% nationally), and 18.3% of older people experience poverty (14.2% nationally).
- Life expectancy for women is 83 years (83.2 nationally) and for men life expectancy is 78.7 years (79.5 nationally)

Swanside: Census 2021

9,376 people live in the Swanside Ward

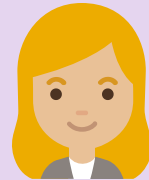
- Since Ward boundary changes in 2016, the total size of Swanside's population has grown by 3% (estimated at 9,106 in 2016).
- Swanside is the third smallest Ward by population, after Whiston and Cronton and St Michael's.
- The proportions of young people, working age people and those aged 65 and older living in Swanside is typical of Knowsley overall.

- Swanside
- Population
- National Identity
- Religion
- Ethnicity
- Health
- Households
- Qualifications
- Work



22.3%

of residents are aged 0
to 19 years old



59.0%

of residents are aged 20
-64 years old



18.7%

of residents are aged
65+ years old

Swanside: Country of Birth



- Swanside
- Population
- National Identity
- Religion
- Ethnicity
- Health
- Households
- Qualifications
- Work

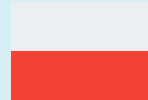


- 96.7% of Swanside's population were born in the UK.
- 2.1% were born elsewhere but have lived in the UK for 10 years or more.
- 0.2% of the population have lived in the UK for less than 2 years.

Top Countries of Birth among Swanside residents:



England



Poland



Britain*



Germany



Ireland



Nigeria



India



China

* Wales, Scotland and Northern Ireland have been grouped together

Swanside: Religions



- Swanside
- Population
- National Identity
- Religion
- Ethnicity
- Health
- Households
- Qualifications
- Work



71.8% of Swanside's population identify as being Christian - the second highest in the borough (after Roby) and higher than the Knowsley overall of 66%. Knowsley has the highest proportion of people who identify as Christian in England & Wales.



22.3% of Swanside's population identify as having no religion. This group of people has increased the most since 2011 across Knowsley.



A small minority of residents (0.6%) follow Islam, making it the second most followed religion in the Ward. 0.3% of residents reported following 'Other' religions, excluding the primary religions.

4.6% of people did not provide an answer to this Census question

Swanside: Ethnicity

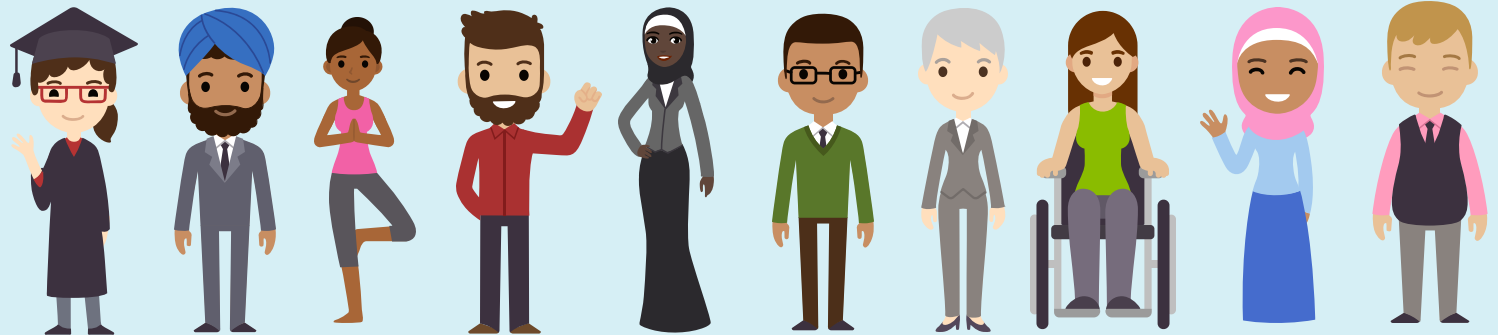


Since 2011, there has been an increase of 81% in the number of Knowsley residents from Asian, Black, Mixed or other ethnic groups

In Swanside:

- 95.7% of residents are from White ethnic groups
- 1.2% are from Asian, Asian British or Asian Welsh Backgrounds
- 1.8% are from Mixed or Multiple ethnic groups
- 0.7% are from Black, Black British, Black Welsh, Caribbean or African ethnic groups
- 0.6% are from Other ethnic groups.

- Swanside
- Population
- National Identity
- Religion
- Ethnicity
- Health
- Households
- Qualifications
- Work



Health & Disability



- Swanside
- Population
- National Identity
- Religion
- Ethnicity
- Health
- Households
- Qualifications
- Work

82.73%

of Swanside residents describe their health as good or very good. This is the highest out of all the wards and higher than the national average

5.53%

of Swanside residents describe their health as bad or very bad

17.69%

of Swanside residents describe themselves as being disabled

909

Swanside residents provide unpaid care, with 299 residents stating that they provide 50+ hours per week of unpaid care.

Health & Disability



- Swanside
- Population
- National Identity
- Religion
- Ethnicity
- Health
- Households
- Qualifications
- Work



Life Expectancy in Swanside

83.0 years for women (83.2 years nationally)

78.7 years for men (79.5 years nationally)



Overall, a slightly higher proportion of residents in Swanside describe their health as being bad or very bad, compared to the national averages.

Health data shows us that there is a similar prevalence of all cancers and respiratory diseases. However, a higher prevalence of heart disease to the national average.

Swanside: Households



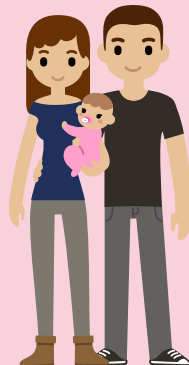
- Swanside
- Population
- National Identity
- Religion
- Ethnicity
- Health
- Households
- Qualifications
- Work

3,864 households in Swanside

The smallest number of households relative to all of the Wards in the borough



26.7% are one-person households



19.1% are three-person households



33.0% are two-person households



16.0% are four-person households

Highest proportion of four-person households in Knowsley

5.2% are five+ person households

Swanside: Households



- Swanside
- Population
- National Identity
- Religion
- Ethnicity
- Health
- Households
- Qualifications
- Work

3,864 households in Swanside



83.1% are owned outright or with a mortgage



11.3% are privately rented



5.3% are social rented

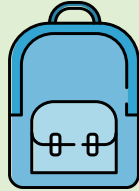
Swanside has significantly less homes that are social rented compared to national levels (17%) and has the lowest proportion of social rented households in the borough. A higher proportion of residents also own their home compared to national levels (62.5%).

The Median price of homes in Swanside has increased from £110,000 in 2011 to £190,000 in 2021. This is an increase of 72.73% - the third fastest rate in the borough.



Swanside: Qualifications

- Swanside
- Population
- National Identity
- Religion
- Ethnicity
- Health
- Households
- Qualifications
- Work



19.0% of Swanside residents have no qualifications



10.0% have Level 1 qualifications

14.4% have Level 2 qualifications

17.9% have Level 3 qualifications



29.8% have level 4 qualifications or above

Nationally, Level 4 qualifications are the most common with 33.8% of residents. The second most common category was no qualifications with 18.2%.

Swanside: Work

81.1% Economically Active

of whom 3.5% are unemployed



18.9% Economically Inactive

Nationally, 75.4% of the population are economically active

of whom 4.4% are unemployed

24.6% are economically inactive



Based on those aged 16 to 64 years



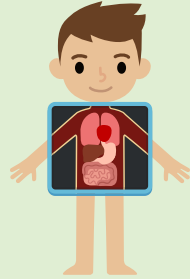
- Swanside
- Population
- National Identity
- Religion
- Ethnicity
- Health
- Households
- Qualifications
- Work

Swanside: Work

Top 5 Industries for Swanside Residents



- Swanside
- Population
- National Identity
- Religion
- Ethnicity
- Health
- Households
- Qualifications
- Work



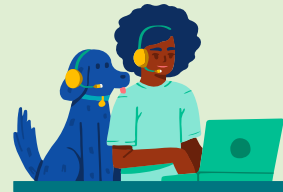
893 residents work in human health & social work activities



508 residents work in construction



644 residents work in wholesale & retail trade



501 residents work in public sector administration



510 residents work in education

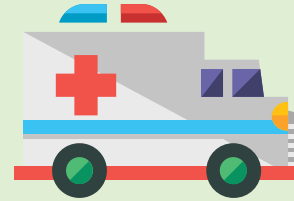
Swanside: Work

1,111 (18.9%) of residents are economically inactive

Top 4 reasons for being economically inactive:



3.1% are retired



4.7% are long-term sick or disabled



4.5% are students



3.7% looking after family or home

Based on those aged 16 to 64 years



- Swanside
- Population
- National Identity
- Religion
- Ethnicity
- Health
- Households
- Qualifications
- Work

For more information on Knowsley please visit
Knowsley Knowledge website

