

Census 2021

Stockbridge Ward Profile

For further information, please visit

www.knowsleyknowledge.org.uk

Census 2021

Stockbridge Ward Profile

Contents:

1. Population Growth in Knowsley
2. Diversity In Knowsley
3. Housing in Knowsley
4. Knowsley Offer in Huyton
5. Stockbridge Overview
6. Stockbridge Population
7. Who Lives in Stockbridge?

Census 2021

Population Growth in Knowsley

155,000
people living in Knowsley

6% increase in Knowsley's
population since 2011

Largest proportional growth
in the Liverpool City Region



Census 2021

Diversity in Knowsley

95.29%

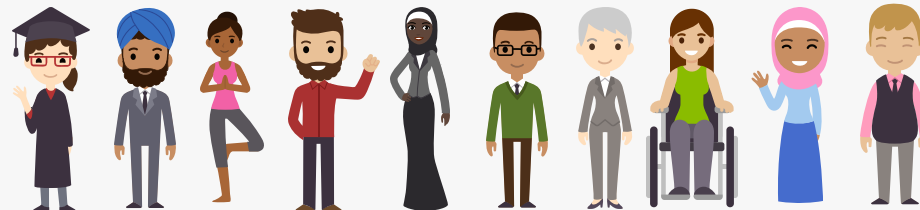
Knowsley's
population are from
White ethnic groups

4.71%

Knowsley's population are
from Asian, Black, Mixed or
other ethnic groups

Since 2011
Increase of 4%
+5,376 people

Since 2011
Increase of 81%
+3,249 people



Census 2021

Diversity in Knowsley

This is the **1st time**
questions on Sexual
Orientation and Gender
Identity have been included
in the Census



Census 2021

Diversity in Knowsley



1.5%
of 16+ residents
identified as **Gay or
Lesbian**



0.1%
of residents
identified as
Pansexual



0.7%
of residents
identified as
Bisexual

64
residents
identified as
Trans Women



86
residents
identified as
Trans Men

In the North West, cities like Liverpool and Manchester have higher populations of residents who identify as Gay or Lesbian

Nationally, 0.1% of the 16+ population identify as being Trans Women and 0.1% of the population identify as being Trans Men



of Knowsley residents aged 16 or over identify as Straight or Heterosexual



More than the North West (90.1%) and England (89.4%) averages

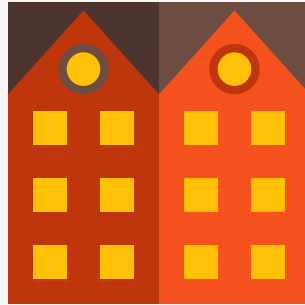
Census 2021

Housing in Knowsley

The number of households in Knowsley has increased by 7.7%, to 66,073 households, an increase of 4,750 households since 2011



43% semi-detached



32% terraced



15% detached



9% flat (or tenement)

Census 2021

Housing in Knowsley

The number of households in Knowsley has increased by 7.7%, to 66,073 households, an increase of 4,750 households since 2011

3 in 5

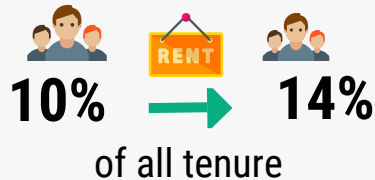


households **own** their property (60%)

Similar to the North-West (62%) and England (61%) averages

Private Rented

accommodation saw the **biggest increase** since 2011



Lower than the North West (19%) and England (21%) averages

Census 2021

Health in Knowsley

76.3% of Knowsley residents describe health as good or very good

9% of Knowsley residents describe health as bad or very bad

Knowsley has the 4th highest proportion of residents who provide **unpaid care** in England



While most adults live happy and healthy lives throughout the Borough, there is a higher proportion of adults that live longer in poor health and with chronic illness and die prematurely. Working age adults in Knowsley are more likely to experience social and economic inequalities to the England average, this puts adults in Knowsley at greater risk of health inequalities and poor health.



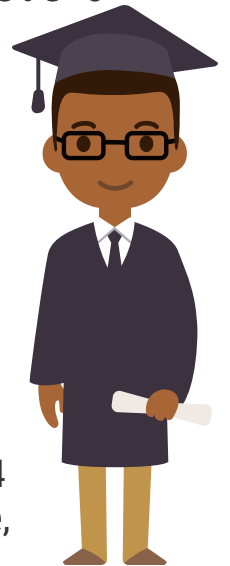
Census 2021

Qualifications in Knowsley

23.7% of adults in Knowsley have a Level 4 qualification - compared to 15.5% in 2011



Increase is greater than LCR which increased by 7% & national levels which increased by 6.6%



Knowsley and the Liverpool City Region LCR have a greater share of residents with no qualifications than average, but this gap is shrinking.

In Knowsley, 26% of adults have no formal qualifications, this is the 6th highest nationally.

Level 4+ qualifications and above: degree (BA, BSc), higher degree (MA, PhD, PGCE), NVQ level 4 to 5, HNC, HND, RSA Higher Diploma, BTEC Higher level, professional qualifications (for example, teaching, nursing, accountancy)

Residents in Huyton

During August and September 2022, residents from across Huyton told us that:

- Their main priorities for the next 5-years is to improve their mental and physical health.
- Local events were highly praised for bringing communities together, post-COVID.
- They are proud to live in Huyton, especially in a community that ‘looks out for each other’ and ‘knows their neighbours well’ with many multi-generational families living within the community.
- They take pride in their family homes, parks and green spaces.
- Family, youth, community centres, groups and events were raised as an important part of the community
- Young people have limitless aspirations, with ambitions from young people including becoming the next Prime Minister, a dancer, international photographer, teacher.

Stockbridge: Census 2021

POPULATION



Stockbridge has a population of 10,718

- Fifth most populated ward in Knowsley.
- Higher proportions of children under 10 years.
- Population size has stayed the same since 2016.

DIVERSITY



91.1% of Stockbridge residents were born in the UK

- After Christianity, Islam was the most followed religion.
- Highest proportion of Buddhists in Knowsley.
- Largest number of Polish residents in Knowsley.
- More ethnically diversity than the Knowsley overall.

HEALTH & DISABILITY



74.66% of residents have good or very good health

- A quarter of Stockbridge residents consider themselves to be disabled under the Equality Act.
- Second highest proportion of residents who are providing 50 hours or more of unpaid care.

HOUSEHOLDS



4,696 Households in Stockbridge

- 33.7% of households are one-person households.
- Highest proportion of social rented households in Knowsley 46.6%.
- Lowest home ownership in Knowsley - 39.3%.

QUALIFICATIONS & WORK



One in five adults have at least a Level 4 qualification

- 67.3% are economically active.
- 32.7% are economically inactive.
- Second highest proportion of residents in Knowsley who were economically inactive due to long-term sickness or disability.

About Stockbridge

This document provides an overview of Stockbridge's population mainly using the 2021 Census.

Stockbridge's population has remained stable since changes to Knowsley's Ward boundaries in 2016, but like much of Knowsley we can see changes in the demographic make-up of the ward.

Stockbridge has a younger age structure than Knowsley overall, with higher proportions of children under 10 years.

Stockbridge is one of the most ethnically diverse Wards in Knowsley.

Key challenges in Stockbridge are around poverty, qualifications and health:

- Stockbridge is among the 20% most deprived wards nationally based on the indices of multiple deprivation (IMD) from 2019.
- 42.2% of children in Stockbridge experience child poverty (17.1% nationally), and 47.7% of older people experience poverty (14.2% nationally)
- Life expectancy for women is 77.1 years (83.2 nationally) and for men life expectancy is 72.6 years (79.5 nationally).

Stockbridge: Census 2021

10,716 people live in the Stockbridge ward

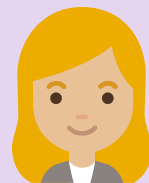
- Since Ward boundary changes in 2016, the total size of Stockbridge's population has not changed significantly but has decreased by 0.4% (estimated at 10,756 in 2016). It is one of four Wards that has observed a decrease in its population size.
- Stockbridge is the fifth largest Ward by population, after Northwood, Page Moss, Shevington and Cherryfield.
- Stockbridge has a younger age structure than Knowsley overall, with higher proportions of those aged 19 years and under and a lower proportion of those aged 65 years and older.

- Stockbridge
- Population
- National Identity
- Religion
- Ethnicity
- Health
- Households
- Qualifications
- Work



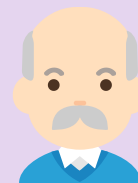
25.9%

of residents are aged 0
to 19 years old



60.1%

of residents are aged 20
-64 years old



13.9%

of residents are aged
65+ years old

Stockbridge: Country of Birth



- Stockbridge
- Population
- National Identity
- Religion
- Ethnicity
- Health
- Households
- Qualifications
- Work



- 91.1% of Stockbridge's population were born in the UK - the lowest proportion in the borough.
- 3.7% were born elsewhere but have lived in the UK for 10 years or more.
- 1.0% of the population have lived in the UK for less than 2-years.
- Stockbridge has the largest Polish community in the borough (320 residents).

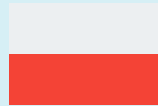
Top Countries of Birth among Stockbridge residents:



England



Britain*



Poland



Brazil



Nigeria



Hungary



Romania



Ireland

* Wales, Scotland and Northern Ireland have been grouped together

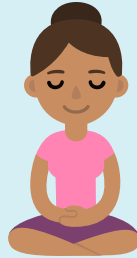
Stockbridge: Religions



- [Stockbridge](#)
- [Population](#)
- [National Identity](#)
- [Religion](#)
- [Ethnicity](#)
- [Health](#)
- [Households](#)
- [Qualifications](#)
- [Work](#)



65.7% of Stockbridge's population identify as being Christian - the same as Knowsley's overall (66%). Knowsley has the highest proportion of people who identify as Christian in England & Wales.



26.9% of Stockbridge's population identify as having no religion. This group of people has increased the most since 2011 across Knowsley.



The second most followed religion in Stockbridge is Islam - 0.7% of residents identified as being Muslim. 0.3% of residents followed Buddhism, highest proportion in Knowsley.

5.8% of people did not provide an answer to this Census question

Stockbridge: Ethnicity



Since 2011, there has been an increase of 81% in the number of Knowsley residents from Asian, Black, Mixed or other ethnic groups

In Stockbridge:

- 94.4% of residents are from White ethnic groups. This Ward has the third lowest proportion of residents from White ethnic groups after Prescot South and Page Moss.
- 1.4% are from Asian, Asian British or Asian Welsh Backgrounds.
- 1.9% are from Mixed or Multiple ethnic groups.
- 1.7% are from Black, Black British, Black Welsh, Caribbean or African ethnic groups. This is the highest proportion of residents from Black ethnic groups out of all the Wards in the borough.
- 0.6% are from Other ethnic groups.

- Stockbridge
- Population
- National Identity
- Religion
- Ethnicity
- Health
- Households
- Qualifications
- Work



Health & Disability



- Stockbridge
- Population
- National Identity
- Religion
- Ethnicity
- Health
- Households
- Qualifications
- Work

74.66%

of Stockbridge residents describe their health as good or very good.

10.43%

of Stockbridge residents describe their health as bad or very bad.

25.59%

of Stockbridge residents describe themselves as being disabled.

1,101

of Stockbridge residents provide unpaid care, with 487 residents stating that they provide 50+ hours per week of unpaid care.

Health & Disability



- Stockbridge
- Population
- National Identity
- Religion
- Ethnicity
- Health
- Households
- Qualifications
- Work



Life Expectancy in Stockbridge

77.1 years for women (83.2 years nationally)

72.6 years for men (79.5 years nationally)



Overall, residents in Stockbridge describe their health as being worse than national averages.

Health data shows us that there is higher prevalence of all cancers (especially lung cancer), heart disease and respiratory diseases.

Stockbridge: Households

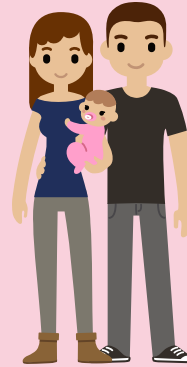


- Stockbridge
- Population
- National Identity
- Religion
- Ethnicity
- Health
- Households
- Qualifications
- Work

4,696 households in Stockbridge



33.7% are one-person households



19.0% are three-person households



30.1% are two-person households



11.1% are four-person households

6.1% are five+ person households

Stockbridge: Households



4,696 households in Stockbridge



39.3% are owned outright or with a mortgage



12.8% are privately rented



46.6% are social rented

- Stockbridge
- Population
- National Identity
- Religion
- Ethnicity
- Health
- Households
- Qualifications
- Work

Stockbridge has the lowest proportion of households that are owned by their tenants in the borough, and a much lower proportion than the national average (62%).

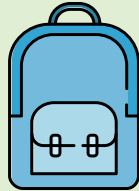
Stockbridge also has the highest proportion of households that are social rented, which is more than double than the national average (17%).

The Median price of homes in Stockbridge has increased from £85,000 in 2011 to £131,000 in 2021. The cost of homes in Stockbridge has risen at a relatively average pace (54.12%) compared to the increase in house prices in other wards.



Stockbridge: Qualifications

- Stockbridge
- Population
- National Identity
- Religion
- Ethnicity
- Health
- Households
- Qualifications
- Work



31.0% of Stockbridge residents have no qualifications



11.2% have Level 1 qualifications

14.0% have Level 2 qualifications

16.1% have Level 3 qualifications



20.0% have level 4 qualifications or above

Nationally, Level 4 qualifications are the most common with 33.8% of residents. The second most common category was no qualifications with 18.2%.

Stockbridge: Work

67.3% Economically Active

of whom 5.5% are unemployed



Nationally, 75.4% of the population are economically active

of whom 4.4% are unemployed

24.6% are economically inactive

32.7% Economically Inactive



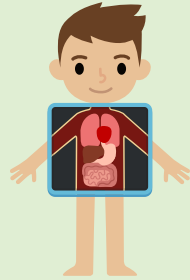
Based on those aged 16 to 64 years



- Stockbridge
- Population
- National Identity
- Religion
- Ethnicity
- Health
- Households
- Qualifications
- Work

Stockbridge: Work

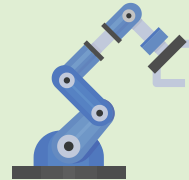
Top 5 Industries for Stockbridge Residents



853 residents work in human health & social work activities



403 residents work in construction



327 residents work in manufacturing



815 residents work in wholesale & retail trade



352 residents work in transport & storage



- Stockbridge
- Population
- National Identity
- Religion
- Ethnicity
- Health
- Households
- Qualifications
- Work

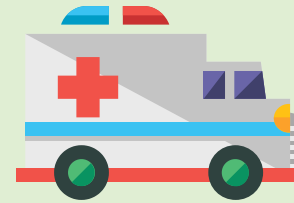
Stockbridge: Work

2.247 (32.7%) of residents are economically inactive

Top 4 reasons for being economically inactive:



1.4% are retired
Second lowest in Knowsley



12.8% are long-term sick
or disabled
Second highest in Knowsley



5.5% are students



7.6% looking after family
or home

Based on those aged 16 to 64 years



- Stockbridge
- Population
- National Identity
- Religion
- Ethnicity
- Health
- Households
- Qualifications
- Work

For more information on Knowsley please visit
Knowsley Knowledge website

