

Census 2021

St Gabriel's Ward Profile

For further information, please visit

www.knowsleyknowledge.org.uk

Census 2021

St Gabriel's Ward Profile

Contents:

1. Population Growth in Knowsley
2. Diversity In Knowsley
3. Housing in Knowsley
4. Knowsley Offer in Huyton
4. St Gabriel's Overview
5. St Gabriel's Population
6. Who Lives in St Gabriel's?

Census 2021

Population Growth in Knowsley

155,000
people living in Knowsley

6% increase in Knowsley's
population since 2011

Largest proportional growth
in the Liverpool City Region



Census 2021

Diversity in Knowsley

95.29%

Knowsley's
population are from
White ethnic groups

4.71%

Knowsley's population are
from Asian, Black, Mixed or
other ethnic groups

Since 2011
Increase of 4%
+5,376 people

Since 2011
Increase of 81%
+3,249 people



Census 2021

Diversity in Knowsley

This is the **1st time**
questions on Sexual
Orientation and Gender
Identity have been included
in the Census



Census 2021

Diversity in Knowsley



1.5%
of 16+ residents
identified as **Gay or
Lesbian**



0.1%
of residents
identified as
Pansexual



0.7%
of residents
identified as
Bisexual

64
residents
identified as
Trans Women



86
residents
identified as
Trans Men

In the North West, cities like Liverpool and Manchester have higher populations of residents who identify as Gay or Lesbian

Nationally, 0.1% of the 16+ population identify as being Trans Women and 0.1% of the population identify as being Trans Men



of Knowsley residents aged 16 or over identify as Straight or Heterosexual



More than the North West (90.1%) and England (89.4%) averages

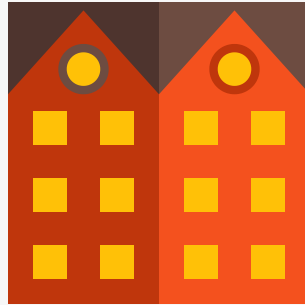
Census 2021

Housing in Knowsley

The number of households in Knowsley has increased by 7.7%, to 66,073 households, an increase of 4,750 households since 2011



43% semi-detached



32% terraced



15% detached



9% flat (or tenement)

Census 2021

Housing in Knowsley

The number of households in Knowsley has increased by 7.7%, to 66,073 households, an increase of 4,750 households since 2011

3 in 5

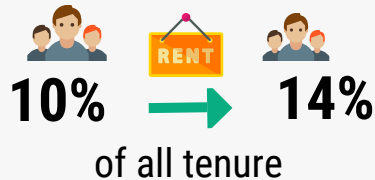


households **own** their property (60%)

Similar to the North-West (62%) and England (61%) averages

Private Rented

accommodation saw the **biggest increase** since 2011



Lower than the North West (19%) and England (21%) averages

Census 2021

Health in Knowsley

76.3% of Knowsley residents describe health as good or very good

9% of Knowsley residents describe health as bad or very bad

Knowsley has the 4th highest proportion of residents who provide **unpaid care** in England



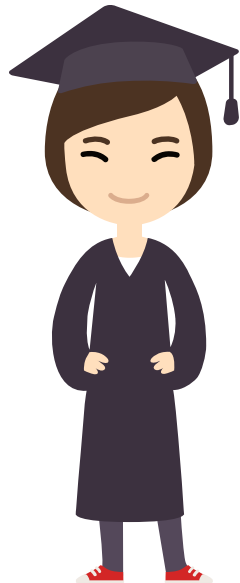
While most adults live happy and healthy lives throughout the Borough, there is a higher proportion of adults that live longer in poor health and with chronic illness and die prematurely. Working age adults in Knowsley are more likely to experience social and economic inequalities compared to the England average, this put adults in Knowsley at greater risk of health inequalities and poor health.



Census 2021

Qualifications in Knowsley

23.7% of adults in Knowsley have a Level 4 qualification - compared to 15.5% in 2011



Increase is greater than LCR which increased by 7% & national levels which increased by 6.6%



Knowsley and the Liverpool City Region LCR have a greater share of residents with no qualifications than average, but this gap is shrinking.

In Knowsley, 26% of adults have no formal qualifications, this is the 6th highest nationally.

Level 4+ qualifications and above: degree (BA, BSc), higher degree (MA, PhD, PGCE), NVQ level 4 to 5, HNC, HND, RSA Higher Diploma, BTEC Higher level, professional qualifications (for example, teaching, nursing, accountancy)

Residents in Huyton

During August and September 2022, residents from across Huyton told us that:

- Their main priorities for the next 5-years is to improve their mental and physical health.
- Local events were highly praised for bringing communities together, post-COVID.
- They are proud to live in Huyton, especially in a community that 'looks out for each other' and 'knows their neighbours well' with many multi-generational families living within the community.
- They take pride in their family homes, parks and green spaces.
- Family, youth, community centres, groups and events were raised as an important part of the community
- Young people have limitless aspirations, with ambitions from young people including becoming the next Prime Minister, a dancer, international photographer, teacher.

St Gabriel's: Census 2021

POPULATION



St Gabriel's has a population of 9,519

- Fourth smallest Ward by population size.
- Age demographics are typical of Knowsley overall.

DIVERSITY



96.8% of St Gabriel's residents were born in the UK

- Less ethnically diverse than other Wards in the Borough - 96.6% of residents are from White ethnic groups.

HEALTH & DISABILITY



77.0% of residents have good or very good health

- Life expectancy for both males (78.6) and females (81.7) is higher in St Gabriel's than most Wards in the Borough.
- Less than 10% of people report their health as being bad or very bad.

HOUSEHOLDS



4,148 Households in St Gabriel's

- 31.8% of households are one-person households
- Almost 1 in 4 households are social rented.
- House prices have increased at the slowest rate in Knowsley since 2011.

QUALIFICATIONS & WORK



More than 1 in 5 adults have at least a Level 4 qualification

- Almost 1/4 of the population have no qualifications.
- Health and Social Work is the most popular industry, followed by Wholesale and Retail Trade.

About St Gabriel's

This document provides an overview of St Gabriel's population mainly using the 2021 Census.

St Gabriel's population has remained stable since changes to Knowsley's Ward boundaries in 2016, but like much of Knowsley we can see changes in the population with more families and younger people living in St Gabriel's.

Key challenges in St Gabriel's are around poverty and qualifications:

- St Gabriels is among the 20% most deprived wards nationally on the indices of multiple deprivation from 2019.
- 31.6% of children in St Gabriel's experience child poverty (17.1% nationally), and 31.6% of older people experience poverty (14.2% nationally)
- Life expectancy for women is 81.7 years (83.2 nationally) and for men life expectancy is 78.6 years (79.5 nationally).

St Gabriel's: Census 2021

9,519 people live in the St Gabriels ward

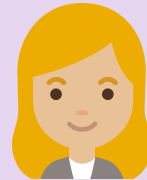
- Since Ward boundary changes in 2016, the total size of St Gabriel's population has not changed significantly (estimated at 9,413 in 2016).
- St Gabriel's is the fourth smallest Ward by population, after Whiston and Cronton, Swanside and St Michael's.
- The proportions of young people, working age people and those aged 65 and older living in St Gabriel's is typical of Knowsley overall.

- St Gabriel's
- Population
- National Identity
- Religion
- Ethnicity
- Health
- Households
- Qualifications
- Work



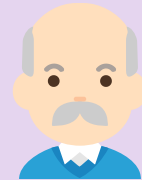
22.9%

of residents are aged 0
to 19 years old



59.1%

of residents are aged 20
-64 years old



17.9%

of residents are aged
65+ years old

St. Gabriel's: Country of Birth



- St Gabriel's
- Population
- National Identity
- Religion
- Ethnicity
- Health
- Households
- Qualifications
- Work



- 96.8% of St Gabriel's population were born in the UK.
- 1.8% were born elsewhere but have lived in the UK for 10 years or more.
- 0.2% of the population have lived in the UK for less than 2 years

Top Countries of Birth among St. Gabriel's residents:



England



Romania



Britain*



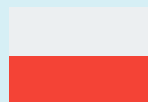
Germany



Ireland



Hungary



Poland



Nigeria

* Wales, Scotland and Northern Ireland have been grouped together

St Gabriel's: Religions



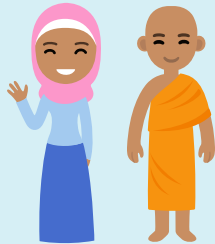
- St Gabriel's
- Population
- National Identity
- Religion
- Ethnicity
- Health
- Households
- Qualifications
- Work



65.6% of St Gabriel's population identify as being Christian - slightly more than the Knowsley overall of 66%. Knowsley has the highest proportion of people who identify as Christian in England & Wales.



28.1% of St Gabriel's population identify as having no religion. This group of people has increased the most since 2011 across Knowsley.



The second most followed religion in St Gabriel's is Islam - 0.7% of residents reported being Muslim. Followed by Buddhism, with 0.2% of the population identifying as Buddhist (15 people).

5.1% of people did not provide an answer to this Census question

St Gabriel's: Ethnicity



Since 2011, there has been an increase of 81% in the number of Knowsley residents from Asian, Black, Mixed or other ethnic groups

In St Gabriel's:

- 96.6% of residents are from White ethnic groups
- 0.8% are from Asian, Asian British or Asian Welsh Backgrounds
- 1.4% are from Mixed or Multiple ethnic groups
- 0.7% are from Black, Black British, Black Welsh, Caribbean or African ethnic groups
- 0.5% are from Other ethnic groups.

- St Gabriel's
- Population
- National Identity
- Religion
- Ethnicity
- Health
- Households
- Qualifications
- Work



Health & Disability



- St Gabriel's
- Population
- National Identity
- Religion
- Ethnicity
- Health
- Households
- Qualifications
- Work

76.95%

of St Gabriel's residents describe their health as good or very good

8.93%

of St Gabriel's residents describe their health as bad or very bad

23.23%

of St Gabriel's residents describe themselves as being disabled

1,070

St Gabriel's residents provide unpaid care, with 353 residents stating that they provide 50+ hours per week of unpaid care.

Health & Disability



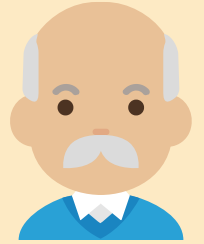
- St Gabriel's
- Population
- National Identity
- Religion
- Ethnicity
- Health
- Households
- Qualifications
- Work



Life Expectancy in St Gabriel's

81.7 years for women (83.2 years nationally)

78.6 years for men (79.5 years nationally)



Overall, a higher proportion of residents in St Gabriel's describe their health as being bad or very bad, compared to the national averages.

Health data shows us that there is a similar prevalence of all cancers (however a higher prevalence of lung cancer). Instances of both heart disease and respiratory diseases are higher than the national average.

St Gabriel's: Households

4,148 households in St Gabriel's



31.8% are one-person households



17.7% are three-person households



32.9% are two-person households



12.5% are four-person households

5.1% are five+ person households

- St Gabriel's
- Population
- National Identity
- Religion
- Ethnicity
- Health
- Households
- Qualifications
- Work



St Gabriel's: Households



4,148 households in St Gabriel's



60.2% are owned outright or with a mortgage



14.9% are privately rented



24.2% are social rented

- St Gabriel's
- Population
- National Identity
- Religion
- Ethnicity
- Health
- Households
- Qualifications
- Work

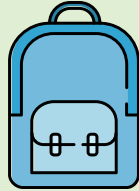
St Gabriel's has more homes that are social rented compared to national levels, (17%) and less homes that are owned than national levels (62.5%).

The Median price of homes in St Gabriel's has increased from £108,000 in 2011 to £135,000 in 2021 (25% increase). The cost of homes in St Gabriel's have increased at the slowest rate in the borough.



St Gabriel's: Qualifications

- St Gabriel's
- Population
- National Identity
- Religion
- Ethnicity
- Health
- Households
- Qualifications
- Work



26.2% of St Gabriel's residents have no qualifications



10.7% have Level 1 qualifications

14.3% have Level 2 qualifications

18.4% have Level 3 qualifications



22.6% have level 4 qualifications or above

Nationally, Level 4 qualifications are the most common with 33.8% of residents. The second most common category was no qualifications with 18.2%.

St Gabriel's: Work

72% Economically
Active

of whom 4.5% are
unemployed



28% Economically
Inactive

Nationally, 75.4% of the
population are
economically active

of whom 4.4% are
unemployed

24.6% are economically
inactive



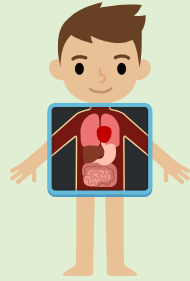
Based on those aged 16 to 64 years



- St Gabriel's
- Population
- National Identity
- Religion
- Ethnicity
- Health
- Households
- Qualifications
- Work

St Gabriel's: Work

Top 5 Industries for St Gabriel's Residents



770 residents work in human health & social work activities



419 residents work in construction



345 residents work in public sector administration



681 residents work in wholesale & retail trade



380 residents work in education



- St Gabriel's
- Population
- National Identity
- Religion
- Ethnicity
- Health
- Households
- Qualifications
- Work

St Gabriel's: Work

1,701 (28%) of residents are economically inactive

Top 4 reasons for being economically inactive:



2.7% are retired



9% are long-term sick or disabled



5.4% are students



6.2% looking after family or home

Based on those aged 16 to 64 years



- St Gabriel's
- Population
- National Identity
- Religion
- Ethnicity
- Health
- Households
- Qualifications
- Work

For more information on Knowsley please visit
Knowsley Knowledge website

