

# Census 2021

## Shevington Ward Profile

For further information, please visit

[www.knowsleyknowledge.org.uk](http://www.knowsleyknowledge.org.uk)

# Census 2021

## Shevington Ward Profile

### Contents:

1. Population Growth in Knowsley
2. Diversity In Knowsley
3. Housing in Knowsley
4. Knowsley Offer in Kirkby
5. Shevington Overview
6. Shevington Population
7. Who Lives in Shevington?

# Census 2021

## Population Growth in Knowsley

**155,000**  
people living in Knowsley

6% increase in Knowsley's  
population since 2011

Largest proportional growth  
in the Liverpool City Region



# Census 2021

## Diversity in Knowsley

**95.29%**

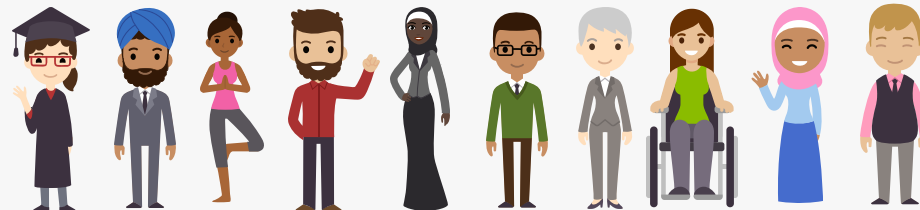
Knowsley's  
population are from  
White ethnic groups

**4.71%**

Knowsley's population are  
from Asian, Black, Mixed or  
other ethnic groups

Since 2011  
Increase of 4%  
**+5,376 people**

Since 2011  
Increase of 81%  
**+3,249 people**



# Census 2021

## Diversity in Knowsley

This is the **1st time**  
questions on Sexual  
Orientation and Gender  
Identity have been included  
in the Census



# Census 2021

## Diversity in Knowsley



**1.5%**  
of 16+ residents  
identified as **Gay or  
Lesbian**



**0.1%**  
of residents  
identified as  
**Pansexual**



**0.7%**  
of residents  
identified as  
**Bisexual**

**64**  
residents  
identified as  
**Trans Women**



**86**  
residents  
identified as  
**Trans Men**

In the North West, cities like Liverpool and Manchester have higher populations of residents who identify as Gay or Lesbian

Nationally, 0.1% of the 16+ population identify as being Trans Women and 0.1% of the population identify as being Trans Men



of Knowsley residents aged 16 or over identify as Straight or Heterosexual



More than the North West (90.1%) and England (89.4%) averages

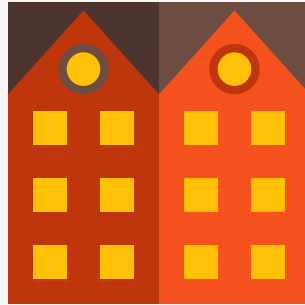
# Census 2021

## Housing in Knowsley

The number of households in Knowsley has increased by 7.7%, to 66,073 households, an increase of 4,750 households since 2011



43% semi-detached



32% terraced



15% detached



9% flat (or tenement)

# Census 2021

## Housing in Knowsley

The number of households in Knowsley has increased by 7.7%, to 66,073 households, an increase of 4,750 households since 2011

**3 in 5**

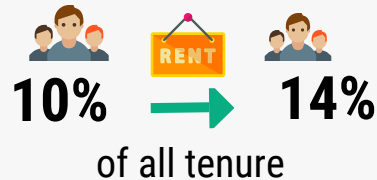


households **own** their property (60%)

*Similar to the North-West (62%) and England (61%) averages*

**Private Rented**

accommodation saw the **biggest increase** since 2011



**Lower** than the North West (19%) and England (21%) averages



# Census 2021

## Health in Knowsley

76.3% of Knowsley residents describe health as good or very good

9% of Knowsley residents describe health as bad or very bad



Knowsley has the 4th highest proportion of residents who provide **unpaid care** in England

While most adults live happy and healthy lives throughout the Borough, there is a higher proportion of adults that live longer in poor health and with chronic illness and die prematurely. Working age adults in Knowsley are more likely to experience social and economic inequalities compared to the England average, this put adults in Knowsley at greater risk of health inequalities and poor health.



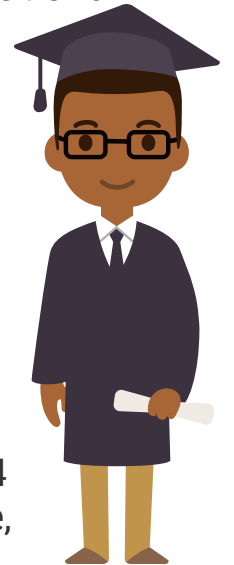
# Census 2021

## Qualifications in Knowsley

**23.7% of adults in Knowsley have a Level 4 qualification - compared to 15.5% in 2011**



**Increase is greater than LCR which increased by 7% & national levels which increased by 6.6%**



Knowsley and the Liverpool City Region LCR have a greater share of residents with no qualifications than average, but this gap is shrinking.

In Knowsley, 26% of adults have no formal qualifications, this is the 6th highest nationally.

Level 4+ qualifications and above: degree (BA, BSc), higher degree (MA, PhD, PGCE), NVQ level 4 to 5, HNC, HND, RSA Higher Diploma, BTEC Higher level, professional qualifications (for example, teaching, nursing, accountancy).

# Residents in Kirkby

During August and September 2022, residents Kirkby residents told us that:

- Their main priorities for the next 5-years is to improve their mental and physical health
- That they experience a number of barriers to achieving their aspirations, including caring responsibilities, finances and their own health
- They are proud to live in Kirkby, especially in a community that 'looks out for each other' and 'knows their neighbours well' with many multi-generational families living within the community.
- They take pride in their family homes, parks and green spaces.
- They are passionate about helping one another, in particular supporting children and families with SEND.

# Shevington: Census 2021

## POPULATION



Shevington has a population of 11,430

- Fourth largest ward by population size in Knowsley.
- Largest increase in Ward population size since 2016 (15.9%).
- Younger population - smallest 65+ population and more 0-19 year olds.

## DIVERSITY



95.2% of Shevington residents were born in the UK

- Third highest proportion of residents who report to be non-religious.
- Ethnic diversity has increased.
- Highest number of residents born in Brazil (67).

## HEALTH & DISABILITY



80.4% of residents have good or very good health

- Fourth lowest proportion of residents reporting to be disabled.
- Fourth lowest proportion (7.2%) of residents reporting that their health is bad or very bad.

## HOUSEHOLDS



4,546 Households in Shevington

- 31% of households are one-person households.
- The proportion of households privately renting is lower than national average whilst social renting is higher.

## QUALIFICATIONS & WORK



One in five adults have at least a Level 4 qualification

- 75.9% are economically active. Fifth highest proportion of economically active.
- 24.1% are economically inactive.

# About Shevington

This document provides an overview of Shevington's population mainly using the 2021 Census.

There has been significant growth in Shevington since Knowsley's Ward boundaries in 2016, the largest growth out of all wards in Knowsley. Much like the rest of Knowsley we can see changes in the population with more diversity and more families and younger people living in Shevington. Shevington has a much younger age structure than other wards in Knowsley, with the smallest 65+ age group.

The key priority for Shevington is ensuring children get the best start in life.

- Overall Shevington is the 30% most deprived wards nationally on the indices of multiple deprivation from 2019, however, there is great variation across the ward. The southern half being in the 10% most deprived areas in England and the northerly being average (50%)
- 25.2% of children in Shevington experience child poverty (17.1% nationally), and 36.5% of older people experience poverty (14.2% nationally)
- Life expectancy for women is 79.0 years (83.2 nationally) and for men life expectancy is 76.8 years (79.5 nationally).

# Shevington: Census 2021

**11,430 people live in the Shevington ward**

- Since Ward boundary changes in 2016, the total size of Shevington's population has grown by 15.9% (estimated at 9,861 in 2016). This is the most growth observed out of all the wards in the borough.
- Shevington is the third largest ward by population, after Northwood and Page Moss.
- Shevington has a younger population than Knowsley's average, with the lowest proportion of residents aged 65+ in the borough and the second highest proportion of 0-19 year olds (behind Northwood by 1%).

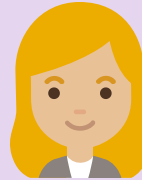


- [Shevington](#)
- [Population](#)
- [National Identity](#)
- [Religion](#)
- [Ethnicity](#)
- [Health](#)
- [Households](#)
- [Qualifications](#)
- [Work](#)



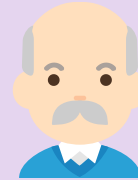
27.4%

of residents are aged 0  
to 19 years old



60.2%

of residents are aged 20  
-64 years old



12.4%

of residents are aged  
65+ years old

# Shevington: Country of Birth



- Shevington
- Population
- National Identity
- Religion
- Ethnicity
- Health
- Households
- Qualifications
- Work



- 95.2% of Shevington's population were born in the UK.
- 2.3% were born elsewhere but have lived in the UK for 10 years or more.
- 0.5% of the population have lived in the UK for less than 2-years.
- Shevington has the largest Brazilian population in Knowsley.

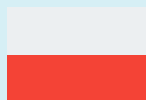
## Top Countries of Birth among Shevington residents:



England



Romania



Poland



Nigeria



Brazil



Ireland



Britain\*



Lithuania

\* Wales, Scotland and Northern Ireland have been grouped together

# Shevington: Religions



- Shevington
- Population
- National Identity
- Religion
- Ethnicity
- Health
- Households
- Qualifications
- Work



65.4% of Shevington's population identify as being Christian - similar to the Knowsley overall of 66%. Knowsley has the highest proportion of people who identify as Christian in England & Wales.



29.8% of Shevington's population identify as having no religion. This group of people has increased the most since 2011 across Knowsley.



The second most followed religion in Shevington is Islam. 0.5% of Shevington's population identify as being Muslim - numerically, this is 56 people.

4.0% of people did not provide an answer to this Census question



# Shevington: Ethnicity

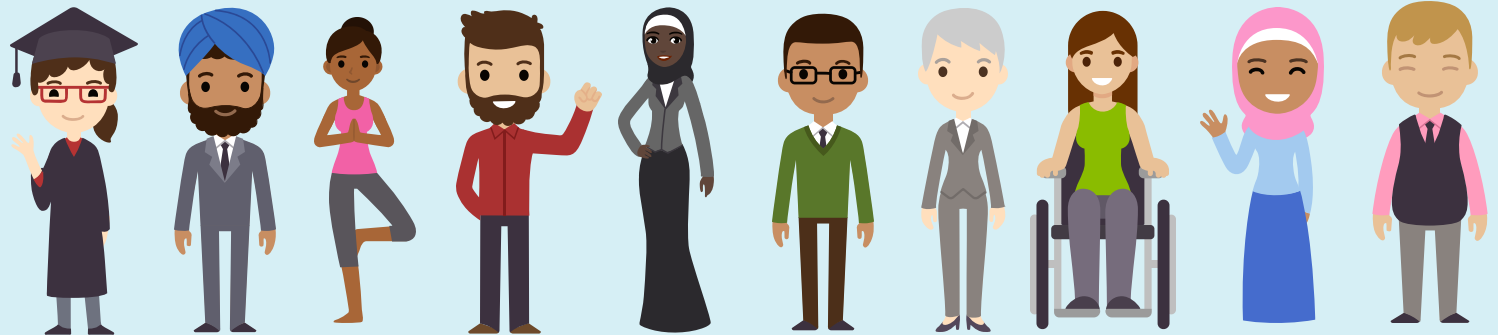


Since 2011, there has been an increase of 81% in the number of Knowsley residents from Asian, Black, Mixed or other ethnic groups

In Shevington:

- 96.2% of residents are from White ethnic groups
- 0.7% are from Asian, Asian British or Asian Welsh Backgrounds
- 1.7% are from Mixed or Multiple ethnic groups
- 1.0% are from Black, Black British, Black Welsh, Caribbean or African ethnic groups
- 0.4% are from Other ethnic groups.

- Shevington
- Population
- National Identity
- Religion
- Ethnicity
- Health
- Households
- Qualifications
- Work



# Health & Disability



- Shevington
- Population
- National Identity
- Religion
- Ethnicity
- Health
- Households
- Qualifications
- Work

80.38%

of Shevington residents describe their health as good or very good

7.24%

of Shevington residents describe their health as bad or very bad

19.84%

of Shevington residents describe themselves as being disabled

1,156

Shevington residents provide unpaid care, with 420 residents stating that they provide 50+ hours per week of unpaid care.

# Health & Disability



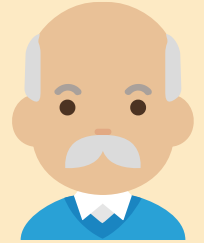
- Shevington
- Population
- National Identity
- Religion
- Ethnicity
- Health
- Households
- Qualifications
- Work



## Life Expectancy in Shevington

79.0 years for women (83.2 years nationally)

76.8 years for men (79.5 years nationally)



Overall, a slightly higher proportion of residents in Shevington describe their health as being bad or very bad, compared to the national averages.

Health data shows us that there is higher prevalence of all cancers (especially lung cancer), heart disease and respiratory diseases.

# Shevington: Households



4,546 households in Shevington



31% are one-person households



19% are three-person households



30% are two-person households

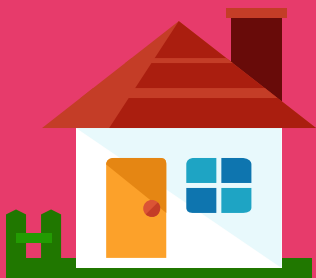


12% are four-person households

8% are five+ person households

- [Shevington](#)
- [Population](#)
- [National Identity](#)
- [Religion](#)
- [Ethnicity](#)
- [Health](#)
- [Households](#)
- [Qualifications](#)
- [Work](#)

# Shevington: Households



4,546 households in Shevington



60.9% are owned outright or with a mortgage



18.0% are privately rented



20.2% are social rented

- Shevington
- Population
- National Identity
- Religion
- Ethnicity
- Health
- Households
- Qualifications
- Work

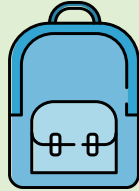
Home ownership in Shevington is reflective of the national average (61%). Private renting is less common in Shevington than nationally and social renting is slightly higher (3% respectively).

The Median price of homes in Shevington has increased from £105,000 in 2011 to £153,000 in 2021. Although this is an increase of 45.71%, this is a slower rate of increase than many other wards in the borough.



# Shevington: Qualifications

- Shevington
- Population
- National Identity
- Religion
- Ethnicity
- Health
- Households
- Qualifications
- Work



25.1% of Shevington residents have no qualifications



10.6% have Level 1 qualifications

15.2% have Level 2 qualifications

18.3% have Level 3 qualifications



23.6% have level 4 qualifications or above

Nationally, Level 4 qualifications are the most common with 33.8% of residents. The second most common category was no qualifications with 18.2%.

# Shevington: Work



- Shevington
- Population
- National Identity
- Religion
- Ethnicity
- Health
- Households
- Qualifications
- Work

75.9% Economically Active

of whom 3.8% are unemployed



24.1% Economically Inactive

Nationally, 75.4% of the population are economically active

of whom 4.4% are unemployed

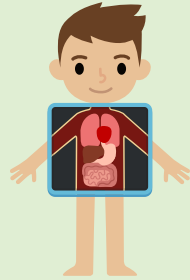
24.6% are economically inactive



Based on those aged 16 to 64 years

# Shevington: Work

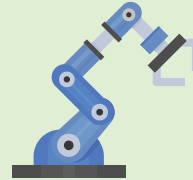
## Top 5 Industries for Shevington Residents



940 residents work in human health & social work activities



910 residents work in wholesale & retail trade



433 residents work in manufacturing



500 residents work in construction



455 residents work in education



- Shevington
- Population
- National Identity
- Religion
- Ethnicity
- Health
- Households
- Qualifications
- Work



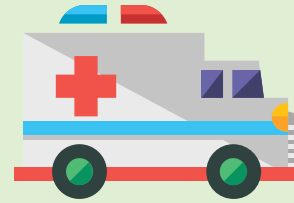
# Shevington: Work

1,779 (24.1%) of residents are economically inactive

Top 4 reasons for being economically inactive:



1.9% are retired



7% are long-term sick or disabled



5.3% are students



5.8% looking after family or home

Based on those aged 16 to 64 years



- Shevington
- Population
- National Identity
- Religion
- Ethnicity
- Health
- Households
- Qualifications
- Work

For more information on Knowsley please visit  
Knowsley Knowledge website

