

Census 2021

Page Moss Ward Profile

For further information, please visit

www.knowsleyknowledge.org.uk

Census 2021

Page Moss Ward Profile

Contents:

1. Population Growth in Knowsley
2. Diversity In Knowsley
3. Housing in Knowsley
4. Knowsley Offer in Huyton
5. Page Moss Overview
6. Page Moss Population
7. Who Lives in Page Moss?

Census 2021

Population Growth in Knowsley

155,000
people living in Knowsley

6% increase in Knowsley's
population since 2011

Largest proportional growth
in the Liverpool City Region



Census 2021

Diversity in Knowsley

95.29%

Knowsley's
population are from
White ethnic groups

4.71%

Knowsley's population are
from Asian, Black, Mixed or
other ethnic groups

Since 2011
Increase of 4%
+5,376 people

Since 2011
Increase of 81%
+3,249 people



Census 2021

Diversity in Knowsley

This is the **1st time**
questions on Sexual
Orientation and Gender
Identity have been included
in the Census



Census 2021

Diversity in Knowsley



1.5%
of 16+ residents
identified as **Gay or
Lesbian**



0.1%
of residents
identified as
Pansexual



0.7%
of residents
identified as
Bisexual

64
residents
identified as
Trans Women



86
residents
identified as
Trans Men

In the North West, cities like Liverpool and Manchester have higher populations of residents who identify as Gay or Lesbian

Nationally, 0.1% of the 16+ population identify as being Trans Women and 0.1% of the population identify as being Trans Men



of Knowsley residents aged 16 or over identify as Straight or Heterosexual



More than the North West (90.1%) and England (89.4%) averages

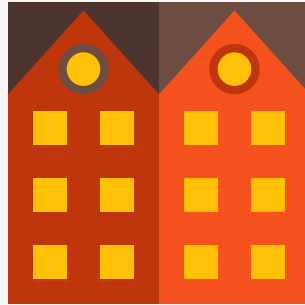
Census 2021

Housing in Knowsley

The number of households in Knowsley has increased by 7.7%, to 66,073 households, an increase of 4,750 households since 2011



43% semi-detached



32% terraced



15% detached



9% flat (or tenement)

Census 2021

Housing in Knowsley

The number of households in Knowsley has increased by 7.7%, to 66,073 households, an increase of 4,750 households since 2011

3 in 5

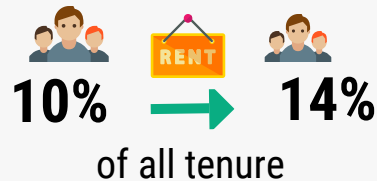


households **own** their property (60%)

Similar to the North-West (62%) and England (61%) averages

Private Rented

accommodation saw the **biggest increase** since 2011



Lower than the North West (19%) and England (21%) averages

Census 2021

Health in Knowsley

76.3% of Knowsley residents describe health as good or very good

9% of Knowsley residents describe health as bad or very bad



Knowsley has the 4th highest proportion of residents who provide **unpaid care** in England

While most adults live happy and healthy lives throughout the Borough, there is a higher proportion of adults that live longer in poor health and with chronic illness and die prematurely. Working age adults in Knowsley are more likely to experience social and economic inequalities compared to the England average, this put adults in Knowsley at greater risk of health inequalities and poor health.



Census 2021

Qualifications in Knowsley

23.7% of adults in Knowsley have a Level 4 qualification - compared to 15.5% in 2011

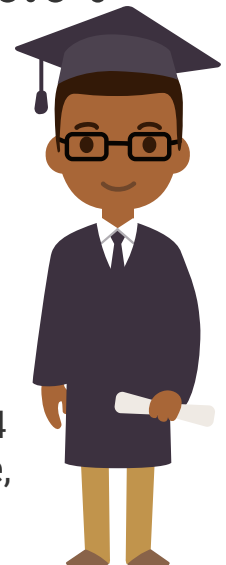
Increase is greater than LCR which increased by 7% & national levels which increased by 6.6%



Knowsley and the Liverpool City Region LCR have a greater share of residents with no qualifications than average, but this gap is shrinking.

In Knowsley, 26% of adults have no formal qualifications, this is the 6th highest nationally.

Level 4+ qualifications and above: degree (BA, BSc), higher degree (MA, PhD, PGCE), NVQ level 4 to 5, HNC, HND, RSA Higher Diploma, BTEC Higher level, professional qualifications (for example, teaching, nursing, accountancy).



Residents in Huyton

During August and September 2022, residents from across Huyton told us that:

- Their main priorities for the next 5-years is to improve their mental and physical health.
- Local events were highly praised for bringing communities together, post-COVID.
- They are proud to live in Huyton, especially in a community that 'looks out for each other' and 'knows their neighbours well' with many multi-generational families living within the community.
- They take pride in their family homes, parks and green spaces.
- Family, youth, community centres, groups and events were raised as an important part of the community
- Young people have limitless aspirations, with ambitions from young people including becoming the next Prime Minister, a dancer, international photographer, teacher.

Page Moss: Census 2021

POPULATION



Page Moss has a population of 11,585

- Second largest ward by population size in Knowsley.
- Population size has increased by 11.7% since 2016, third largest growth in the Borough.

DIVERSITY



92.6% of Page Moss residents were born in the UK

- Second highest proportion of residents born outside of UK, after Stockbridge.
- Large Eastern European community.

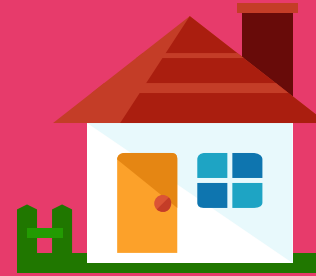
HEALTH & DISABILITY



74.7% of residents have good or very good health

- Almost 1/4 of residents describe themselves as being disabled.
- Second highest number of unpaid carers - 1,208, after Northwood.

HOUSEHOLDS



5,000 Households in Page Moss

- 30.8% of residents live alone.
- Less homes are owned in Page Moss than nationally - 48.4% compared to 62.5%.

QUALIFICATIONS & WORK



One in five adults have at least a Level 4 qualification

- 68.4% are economically active and 31.6% are economically inactive.
- Second highest proportion of economic inactivity due to looking after the home or family.

About Page Moss

This document provides an overview of Page Moss' population mainly using the 2021 Census.

Page Moss' population has grown significantly since changes to Knowsley's Ward boundaries in 2016, and like much of Knowsley we can see changes in the population with more diversity and more families and younger people living in Page Moss.

Key challenges in Page Moss are around poverty, qualifications and health:

- Page Moss is among the 20% most deprived wards nationally on the indices of multiple deprivation from 2019.
- 42.4% of children in Page Moss experience child poverty (17.1% nationally), and 44.4% of older people experience poverty (14.2% nationally)
- Life expectancy for women is 79.3 years (83.2 nationally) and for men life expectancy is 75.1 years (79.5 nationally).

Page Moss: Census 2021

11,585 people live in the Page Moss ward

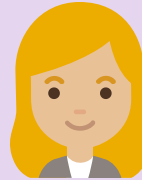
- Since Ward boundary changes in 2016, the total size of Page Moss' population has seen the highest proportional increase of 15.9%. The population was estimated at 10,014 in 2016 and has increased by 1,569.
- Page Moss is the second largest Ward by population, after Northwood.
- Page Moss has the second lowest proportion of residents of retirement age, after Northwood.

- Page Moss
- Population
- National Identity
- Religion
- Ethnicity
- Health
- Households
- Qualifications
- Work



26.1%

of residents are aged 0
to 19 years old



60.1%

of residents are aged 20
-64 years old



13.8%

of residents are aged
65+ years old

Page Moss: Country of Birth



- 92.6% of Page Moss' population were born in the UK - the second lowest proportion in the borough, after Stockbridge.
- 3.1% were born elsewhere but have lived in the UK for 10 years or more.
- 1.0% of the population have lived in the UK for less than 2-years

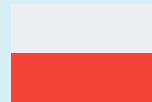
Top Countries of Birth among Page Moss residents:



England



Nigeria



Poland



India



Romania



Sri Lanka



Britain*



Philippines

* Wales, Scotland and Northern Ireland have been grouped together

- [Page Moss](#)
- [Population](#)
- [National Identity](#)
- [Religion](#)
- [Ethnicity](#)
- [Health](#)
- [Households](#)
- [Qualifications](#)
- [Work](#)



Page Moss: Religions



62.2% of Page Moss' population identify as being Christian - slightly less than Knowsley's overall of 66%. Knowsley has the highest proportion of people who identify as Christian in England & Wales.



The second most followed religion in Page Moss is Islam. 1.3% of Page Moss' population identify as being Muslim. This is the highest proportion of residents identifying as Muslim out of the Wards in Knowsley.



30.5% of Page Moss' population identify as having no religion. This group of people has increased the most since 2011 across Knowsley.



4.9% of people did not provide an answer to this Census question

- Page Moss
- Population
- National Identity
- Religion
- Ethnicity
- Health
- Households
- Qualifications
- Work

Page Moss: Ethnicity



Since 2011, there has been an increase of 81% in the number of Knowsley residents from Asian, Black, Mixed or other ethnic groups

In Page Moss:

- 93.9% of residents are from White ethnic groups
- 2.1% are from Asian, Asian British or Asian Welsh Backgrounds
- 1.6% are from Mixed or Multiple ethnic groups
- 1.3% are from Black, Black British, Black Welsh, Caribbean or African ethnic groups
- 1.0% are from Other ethnic groups.

- [Page Moss](#)
- [Population](#)
- [National Identity](#)
- [Religion](#)
- [Ethnicity](#)
- [Health](#)
- [Households](#)
- [Qualifications](#)
- [Work](#)



Health & Disability



- Page Moss
- Population
- National Identity
- Religion
- Ethnicity
- Health
- Households
- Qualifications
- Work

76.07%

of Page Moss residents describe their health as good or very good

9.50%

of Page Moss residents describe their health as bad or very bad

24.02%

of Page Moss residents describe themselves as being disabled

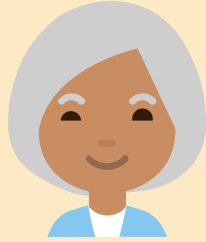
1,208

Page Moss residents provide unpaid care, with 504 residents stating that they provide 50+ hours per week of unpaid care.

Health & Disability



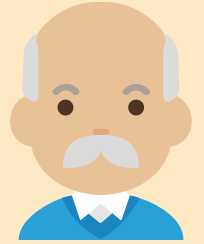
- Page Moss
- Population
- National Identity
- Religion
- Ethnicity
- Health
- Households
- Qualifications
- Work



Life Expectancy in Page Moss

79.3 years for women (83.2 years nationally)

75.1 years for men (79.5 years nationally)



Overall, a higher proportion of residents in Page Moss describe their health as being bad or very bad, compared to the national averages.

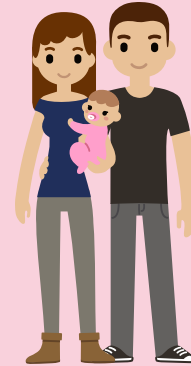
Health data shows us that there is higher prevalence of all cancers (especially lung cancer), heart disease and respiratory diseases.

Page Moss: Households

5,000 households in Page Moss



30.8% are one-person households



20.2% are three-person households



31.8% are two-person households



11.6% are four-person households

5.6% are five+ person households

- Page Moss
- Population
- National Identity
- Religion
- Ethnicity
- Health
- Households
- Qualifications
- Work

Page Moss: Households



5,000 households in Page Moss



48.4% are owned outright or with a mortgage



13.2% are privately rented



37.1% are social rented

- Page Moss
- Population
- National Identity
- Religion
- Ethnicity
- Health
- Households
- Qualifications
- Work

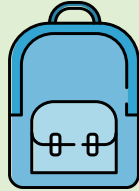
Page Moss has a significantly higher proportion of homes that are social rented compared to national levels (17%) and significantly less homes that are owned than national levels (62.5%). A lower proportion of residents privately rent in Page Moss, compared to England (21%).

The Median price of homes in Page Moss has increased from £90,000 in 2011 to £140,000 in 2021. This is a 55.56% increase, however the price of homes in Page Moss remains relatively low compared to the likes of Roby, Halewood South and Prescot North.



Page Moss: Qualifications

- Page Moss
- Population
- National Identity
- Religion
- Ethnicity
- Health
- Households
- Qualifications
- Work



30.7% of Page Moss residents have no qualifications



10.3% have Level 1 qualifications

14.0% have Level 2 qualifications

16.5% have Level 3 qualifications



21.4% have level 4 qualifications or above

Nationally, Level 4 qualifications are the most common with 33.8% of residents. The second most common category was no qualifications with 18.2%.

Page Moss: Work

68.4% Economically Active

of whom 5.2% are unemployed



31.6% Economically Inactive

Nationally, 75.4% of the population are economically active

of whom 4.4% are unemployed

24.6% are economically inactive



Based on those aged 16 to 64 years



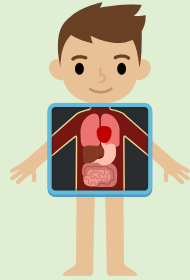
- Page Moss
- Population
- National Identity
- Religion
- Ethnicity
- Health
- Households
- Qualifications
- Work

Page Moss: Work

Top 5 Industries for Page Moss Residents



- Page Moss
- Population
- National Identity
- Religion
- Ethnicity
- Health
- Households
- Qualifications
- Work



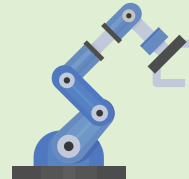
975 residents work in human health & social work activities



395 residents work in education



816 residents work in wholesale & retail trade



311 residents work in manufacturing



309 residents work in transport & storage

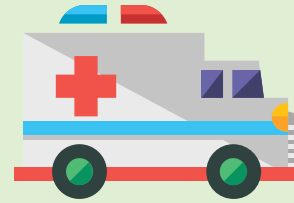
Page Moss: Work

2,351 (31.6%) of residents are economically inactive

Top 4 reasons for being economically inactive:



1.7% are retired



10.5% are long-term sick or disabled



5.3% are students



8.9% looking after family or home

Based on those aged 16 to 64 years



- Page Moss
- Population
- National Identity
- Religion
- Ethnicity
- Health
- Households
- Qualifications
- Work

For more information on Knowsley please visit
Knowsley Knowledge website

