

Census 2021

Halewood South Ward Profile

For further information, please visit

www.knowsleyknowledge.org.uk

Census 2021

Halewood South Ward Profile

Contents:

1. Population Growth in Knowsley
2. Diversity In Knowsley
3. Housing in Knowsley
4. Knowsley Offer in Halewood
5. Halewood South Overview
6. Halewood South Population
7. Who Lives in Halewood South?

Census 2021

Population Growth in Knowsley

155,000
people living in Knowsley

6% increase in Knowsley's
population since 2011

Largest proportional growth
in the Liverpool City Region



Census 2021

Diversity in Knowsley

95.29%

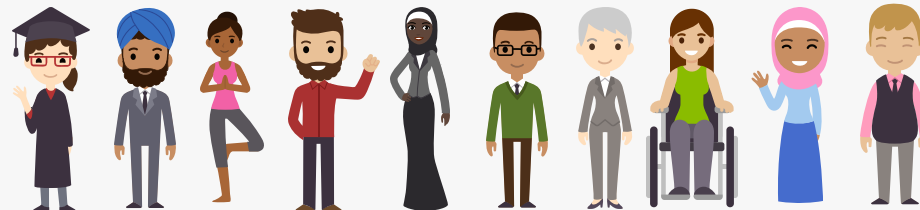
Knowsley's
population are from
White ethnic groups

4.71%

Knowsley's population are
from Asian, Black, Mixed or
other ethnic groups

Since 2011
Increase of 4%
+5,376 people

Since 2011
Increase of 81%
+3,249 people



Census 2021

Diversity in Knowsley

This is the **1st time**
questions on Sexual
Orientation and Gender
Identity have been included
in the Census



Census 2021

Diversity in Knowsley



1.5%
of 16+ residents
identified as **Gay or
Lesbian**



0.1%
of residents
identified as
Pansexual



0.7%
of residents
identified as
Bisexual

64
residents
identified as
Trans Women



86
residents
identified as
Trans Men

In the North West, cities like Liverpool and Manchester have higher populations of residents who identify as Gay or Lesbian

Nationally, 0.1% of the 16+ population identify as being Trans Women and 0.1% of the population identify as being Trans Men



of Knowsley residents aged 16 or over identify as Straight or Heterosexual



More than the North West (90.1%) and England (89.4%) averages

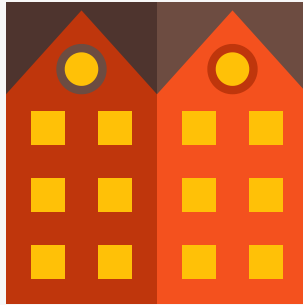
Census 2021

Housing in Knowsley

The number of households in Knowsley has increased by 7.7%, to 66,073 households, an increase of 4,750 households since 2011



43% semi-detached



32% terraced



15% detached



9% flat (or tenement)

Census 2021

Housing in Knowsley

The number of households in Knowsley has increased by 7.7%, to 66,073 households, an increase of 4,750 households since 2011

3 in 5

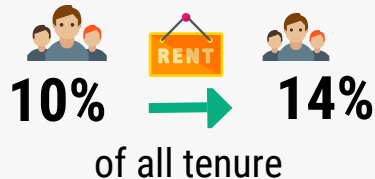


households **own** their property (60%)

Similar to the North-West (62%) and England (61%) averages

Private Rented

accommodation saw the **biggest increase** since 2011



Lower than the North West (19%) and England (21%) averages

Census 2021

Health in Knowsley

76.3% of Knowsley residents describe health as good or very good

9% of Knowsley residents describe health as bad or very bad

Knowsley has the 4th highest proportion of residents who provide **unpaid care** in England



While most adults live happy and healthy lives throughout the Borough, there is a higher proportion of adults that live longer in poor health and with chronic illness and die prematurely. Working age adults in Knowsley are more likely to experience social and economic inequalities compared to the England average, this put adults in Knowsley at greater risk of health inequalities and poor health.



Census 2021

Qualifications in Knowsley

23.7% of adults in Knowsley have a Level 4 qualification - compared to 15.5% in 2011

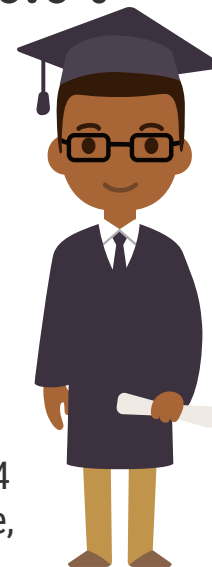


Increase is greater than LCR which increased by 7% & national levels which increased by 6.6%

Knowsley and the Liverpool City Region LCR have a greater share of residents with no qualifications than average, but this gap is shrinking.

In Knowsley, 26% of adults have no formal qualifications, this is the 6th highest nationally.

Level 4+ qualifications and above: degree (BA, BSc), higher degree (MA, PhD, PGCE), NVQ level 4 to 5, HNC, HND, RSA Higher Diploma, BTEC Higher level, professional qualifications (for example, teaching, nursing, accountancy)



Residents in Halewood

During August and September 2022, Halewood residents told us that:

- Their main priorities for the next 5-years is to improve their mental and physical health.
- That they experience a number of barriers to achieving their aspirations, including caring responsibilities, finances and their own health. In Halewood, transport to other places was also mentioned as an issue.
- They are proud to live in Halewood, especially in a community that 'looks out for each other' and 'knows their neighbours well' with many multi-generational families living within the community.
- They are passionate about helping one another, in particular supporting children and families with SEND.

Halewood South: Census 2021

POPULATION



Halewood South has a population of 10,404

- The Ward population size is slightly lower than average for Knowsley.
- Biggest reduction in population size since 2016 in Knowsley.

DIVERSITY



95.58% of Halewood South residents were born in the UK

- Halewood has the highest proportion of residents from Mixed or Multiple ethnic groups (2.3% in Halewood South and 2.5% in Halewood North).
- Residents were born in 74 different countries.

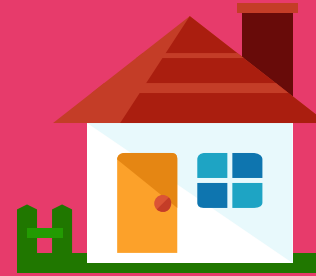
HEALTH & DISABILITY



77.5% of residents have good or very good health

- 22.8% of residents self-reported to be disabled. This is lower than 2/3 of Wards in Knowsley.
- Third highest number of residents providing unpaid care.

HOUSEHOLDS



4,477 Households in Halewood South

- 32.6% of households are one-person households.
- House prices have risen at the fastest rate in the Borough since 2011 (77% increase).

QUALIFICATIONS & WORK



More than 1 in 5 adults have at least a Level 4 qualification

- 72.3% are economically active.
- 27.7% are economically inactive.

About Halewood South

This document provides an overview of Halewood South's population mainly using the 2021 Census.

Halewood South's population has slightly reduced in size since changes to Knowsley's Ward boundaries in 2016, but like much of Knowsley, there has been changes in the population with more diversity and more families. We expect the population to grow in size in the next few years due to the vast new housing developments in this Ward. We will monitor and work to understand the demographic of those moving into the new housing, so we can ensure we have the right services.

A key priority for services in Halewood South is supporting residents to 'start well' and 'age well', considering areas within the Ward with higher levels of deprivation.

- On average, Halewood South is ranked in between the 20% and 40% most deprived wards nationally - based on the indices of multiple deprivation from 2019.
- 25.8% of children in Halewood South experience child poverty (17.1% nationally), and 26.0% of older people experience poverty (14.2% nationally).
- Life expectancy for women is 81.4 years (83.2 nationally) and for men life expectancy is 77.8 years (79.5 nationally).

Halewood South: Census 2021



- Halewood South
- Population
- National Identity
- Religion
- Ethnicity
- Health
- Households
- Qualifications
- Work

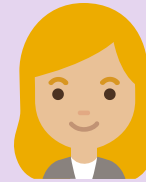
10,404 people live in the Halewood South Ward

- Since Ward boundary changes in 2016, the total size of Halewood South's population has decreased slightly since 2016. The estimated population was 10,730 in 2016 so there has been a 3% decrease. This is the largest decrease relative to other Ward population changes.
- The proportions of young people, working age people and those aged 65 and older living in Halewood South is typical of Knowsley overall.
- Halewood South has the second highest proportion of residents aged 85+ (8.6% of all residents), behind Roby.



23.5%

of residents are aged 0
to 19 years old



58.4%

of residents are aged 20
-64 years old



18.2%

of residents are aged
65+ years old

Halewood South: Country of Birth



- Halewood South
- Population
- National Identity
- Religion
- Ethnicity
- Health
- Households
- Qualifications
- Work



95.58% of Halewood South's population were born in the UK.
2.70% were born elsewhere but have lived in the UK for 10 years or more.
0.48% of the population have lived in the UK for less than 2-years
Residents were born in 74 different countries.

Top Countries of Birth among Halewood South residents:



England



Romania



Poland



Germany



Britain*



Italy



Ireland



China

* Wales, Scotland and Northern Ireland have been grouped together

Halewood South: Religions



- [Halewood South](#)
- [Population](#)
- [National Identity](#)
- [Religion](#)
- [Ethnicity](#)
- [Health](#)
- [Households](#)
- [Qualifications](#)
- [Work](#)



64.8% of Halewood South's population identify as being Christian - slightly more than the Knowsley overall 66%. Knowsley has the highest proportion of people who identify as Christian in England & Wales.



29.1% of Halewood South's population identify as having no religion. This group of people has increased the most since 2011 across Knowsley.



The second most followed religion after Christianity is Islam. 0.9% of Halewood South's population identify as being Muslim - this is the second highest proportion in the Borough.

4.5% of people did not provide an answer to this Census question.

Halewood South: Ethnicity



Since 2011, there has been an increase of 81% in the number of Knowsley residents from Asian, Black, Mixed or other ethnic groups

In Halewood South:

- Halewood South
- Population
- National Identity
- Religion
- Ethnicity
- Health
- Households
- Qualifications
- Work

- 94.7% of residents are from White ethnic groups
- 1.6% are from Asian, Asian British or Asian Welsh Backgrounds
- 2.3% are from Mixed or Multiple ethnic groups
- 0.8% are from Black, Black British, Black Welsh, Caribbean or African ethnic groups
- 0.6% are from Other ethnic groups.



Health & Disability



- Halewood South
- Population
- National Identity
- Religion
- Ethnicity
- Health
- Households
- Qualifications
- Work

77.46%

of Halewood South residents describe their health as good or very good

8.51%

of Halewood South residents describe their health as bad or very bad

22.80%

of Halewood South residents describe themselves as being disabled

1,163

Halewood South residents provide unpaid care, with 398 residents stating that they provide 50+ hours per week of unpaid care.

Health & Disability



- Halewood South
- Population
- National Identity
- Religion
- Ethnicity
- Health
- Households
- Qualifications
- Work



Life Expectancy in Halewood South

81.4 years for women (83.2 years nationally)

77.6 years for men (79.5 years nationally)



Overall, a slightly higher proportion of residents in Halewood South describe their health as being bad or very bad, compared to the national averages.

Health data shows us that there is higher prevalence of all cancers (especially lung cancer), heart disease and respiratory diseases.

Halewood South: Households



4,477 households in Halewood South



32.6% are one-person households



17.9% are three-person households



30.2% are two-person households



12.9% are four-person households

6.4% are five+ person households

- Halewood South
- Population
- National Identity
- Religion
- Ethnicity
- Health
- Households
- Qualifications
- Work

Halewood South: Households

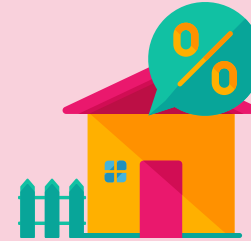


- Halewood South
- Population
- National Identity
- Religion
- Ethnicity
- Health
- Households
- Qualifications
- Work

4,477 households in Halewood South



62.0% are owned outright or with a mortgage



10.3% are privately rented



26.2% are social rented

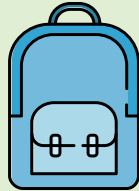
Halewood South has more homes that are social rented compared to national levels, (17%). The proportion of homes that are owned is similar to national levels (62.5%).

The Median price of homes in Halewood South has increased from £115,000 in 2011 to £204,000 in 2021. This is a 77.39% increase, increasing at the fastest rate in borough. The homes in Halewood South, on average, are the second most expensive in Knowsley, after Roby.



Halewood South: Qualifications

- Halewood South
- Population
- National Identity
- Religion
- Ethnicity
- Health
- Households
- Qualifications
- Work



25.7% of Halewood South residents have no qualifications



11.1% have Level 1 qualifications
14.2% have Level 2 qualifications
17.0% have Level 3 qualifications



23.7% have level 4 qualifications or above

Nationally, Level 4 qualifications are the most common with 33.8% of residents. The second most common category was no qualifications with 18.2%.

Halewood South: Work

72.3% Economically Active

of whom 5% are unemployed



27.7% Economically Inactive

Nationally, 75.4% of the population are economically active

of whom 4.4% are unemployed

24.6% are economically inactive



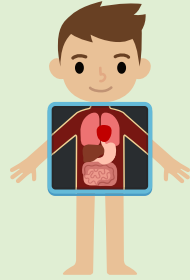
Based on those aged 16 to 64 years



- Halewood South
- Population
- National Identity
- Religion
- Ethnicity
- Health
- Households
- Qualifications
- Work

Halewood South: Work

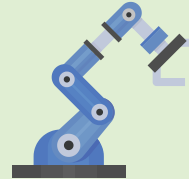
Top 5 Industries for Halewood South Residents



755 residents work in human health & social work activities



734 residents work in wholesale & retail trade



486 residents work in manufacturing



389 residents work in construction



473 residents work in education



- Halewood South
- Population
- National Identity
- Religion
- Ethnicity
- Health
- Households
- Qualifications
- Work

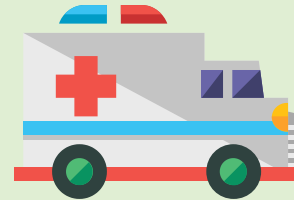
Halewood South: Work

1,814 (27.7%) of residents are economically inactive

Top 4 reasons for being economically inactive:



3.1% are retired



8.9% are long-term sick or disabled



5.3% are students



5.8% looking after family or home

Based on those aged 16 to 64 years



- Halewood South
- Population
- National Identity
- Religion
- Ethnicity
- Health
- Households
- Qualifications
- Work

For more information on Knowsley please visit
Knowsley Knowledge website

