

Census 2021

Cherryfield Ward Profile

For further information, please visit

www.knowsleyknowledge.org.uk

Census 2021

Cherryfield Ward Profile

Contents:

1. [Population Growth in Knowsley](#)
2. [Diversity In Knowsley](#)
3. [Housing in Knowsley](#)
4. [Knowsley Offer in Kirkby](#)
4. [Cherryfield Overview](#)
5. [Cherryfield Population](#)
6. [Who Lives in Cherryfield?](#)

Census 2021: Knowsley Population Growth

155,000
people living in Knowsley

6% increase in Knowsley's
population since 2011

Largest proportional growth
in the Liverpool City Region



Census 2021: Diversity in Knowsley

95.29%

Knowsley's
population are from
White ethnic groups

4.71%

Knowsley's population are
from Asian, Black, Mixed or
other ethnic groups

Since 2011
Increase of 4%
+5,376 people

Since 2011
Increase of 81%
+3,249 people

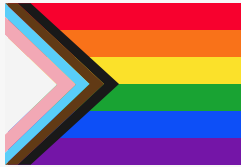


Census 2021: Diversity in Knowsley

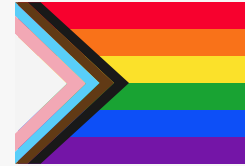
This is the **1st time**
questions on Sexual
Orientation and Gender
Identity have been included
in the Census



Census 2021: Diversity in Knowsley



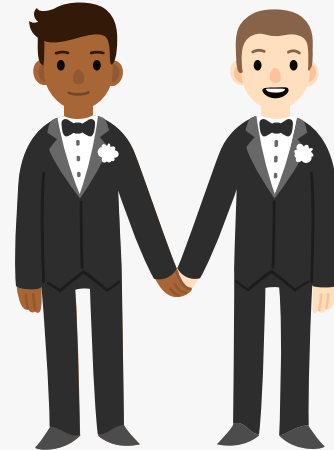
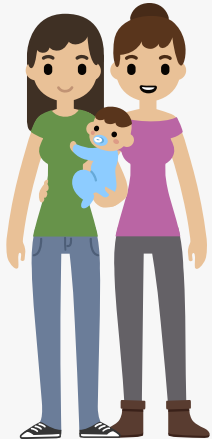
1.5% of Knowsley residents
(1,803 people)
identified as Gay or Lesbian



This is the same as national levels, although in the North West, cities like Liverpool & Manchester have higher proportions of people who identify as Gay or Lesbian

0.72% of Knowsley residents (889 people) identify as bisexual, below the national average of 1.3%

92% of Knowsley residents (114,338 people) identify as straight or heterosexual, above the national average of 89.4%



This question was asked of residents aged 16+ only. Not all residents provided an answer.

Census 2021: Diversity in Knowsley

Gender Identity in Knowsley



86

Knowsley residents identified as a
Trans Man (0.1% of residents)



64

Knowsley residents identified as a
Trans Woman (0.1% of population)



244

Have a gender identity different from
sex registered at birth or identify as all
other genders
(0.2% of population)

This is the same as national levels, with:
0.1% of the population identify as being Trans Women
0.1% of the population identify as being Trans Men

This question was asked of residents aged 16+ only. Not all residents provided an answer.

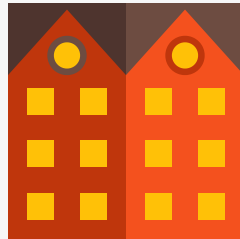
Census 2021: Housing in Knowsley

The number of households in Knowsley has increased by 7.7%, an increase of 4,750 households since 2011

There has been an increase of people living in smaller households in the last 10-years. Knowsley has the third largest proportion of people living in 3-person households nationally (18.7%, 12,369 people).



43% semi-detached



32% terraced



15% detached



9% flat

Census 2021: Housing in Knowsley

Housing Tenure

3 in 5

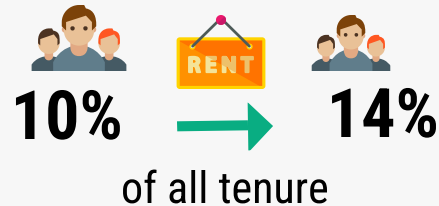


households **own** their
property (60%)

*Similar to the North-West (62%) and England
(61%) averages*

Private Rented

accommodation saw the
biggest increase
since 2011



Lower than the North West (19%)
and England (21%) averages

Census 2021: Health in Knowsley

76.3% of Knowsley residents describe health as good or very good

9% of Knowsley residents describe health as bad or very bad

Knowsley has the 4th highest proportion of residents who provide **unpaid care** in England



While most adults live happy and healthy lives throughout the Borough, there is a higher proportion of adults that live longer in poor health and with chronic illness and die prematurely. Working age adults in Knowsley are more likely to experience social and economic inequalities compared to the England average, this put adults in Knowsley at greater risk of health inequalities and poor health.





Residents in Kirkby

During August and September 2022, Kirkby residents told us that:

- Their main priorities for the next 5-years is to improve their mental and physical health.
- That they experience a number of barriers to achieving their aspirations, including caring responsibilities, finances and their own health.
- They are proud to live in Kirkby, especially in a community that 'looks out for each other' and 'knows their neighbours well' with many multi-generational families living within the community.
- They take pride in their family homes, parks and green spaces.
- They are passionate about helping one another, in particular supporting children and families with SEND.

About Cherryfield

This document provides an overview of Cherryfield's population mainly using the 2021 Census.

Cherryfield's population has remained stable since changes to Knowsley's Ward boundaries in 2016, but like much of Knowsley we can see changes in the population with more diversity and more families and younger people living in Cherryfield.

Key challenges in Cherryfield are around poverty, qualifications and health: Cherryfield is among the 20% most deprived wards nationally on the indices of multiple deprivation from 2019.

34.2% of children in Cherryfield experience child poverty (17.1% nationally), and 32.6% of older people experience poverty (14.2% nationally)

Life expectancy for women is 79.1 years (83.2 nationally) and for men life expectancy is 76.7 years (79.5 nationally).

Cherryfield: Census 2021

POPULATION



Cherryfield has a population of 10,773

- Fourth largest ward in Knowsley
- Population size has stayed the same since 2016

DIVERSITY



95.11% of Cherryfield residents were born in the UK

- High proportion of Christians living in Cherryfield
- Ethnic diversity has increased

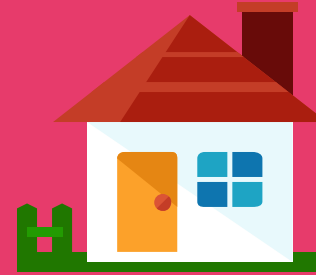
HEALTH & DISABILITY



76.49% of residents have good or very good health

- There are high level of Cherryfield residents who describe themselves as disabled or in poor health

HOUSEHOLDS



4622 Households in Cherryfield

- 31% (1,455) of households are one-person households
- 78% of houses are owned outright

QUALIFICATIONS & WORK



One in five adults have at least a Level 4 qualification

- 58% are economically active
- 41% are economically inactive

Cherryfield: Census 2021

10,773 people live in the Cherryfield ward

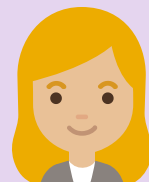
- Since Ward boundary changes in 2016, the total size of Cherryfield's population has not changed significantly (estimated at 10,778 in 2016)
- Cherryfield is the fourth largest Ward by population, after Northwood, Page Moss and Shevington
- The proportions of young people, working age people and those aged 65 and older living in Cherryfield is typical of Knowsley overall

- Cherryfield
- Population
- [National Identity](#)
- [Religion](#)
- [Ethnicity](#)
- [Health](#)
- [Households](#)
- [Qualifications](#)
- [Work](#)



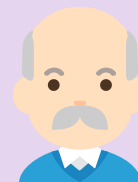
24.3%

of residents are aged 0
to 19 years old



59.6%

of residents are aged 20
-64 years old



16%

of residents are aged
65+ years old

Cherryfield: National Identity



- [Cherryfield](#)
- [Population](#)
- [National Identity](#)
- [Religion](#)
- [Ethnicity](#)
- [Health](#)
- [Households](#)
- [Qualifications](#)
- [Work](#)



95.11% of Cherryfield's population were born in the UK.
2.22% were born elsewhere but have lived in the UK for 10 years or more.
0.63% of the population have lived in the UK for less than 2-years

Top nationalities among Cherryfield residents:



British



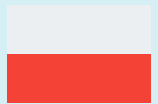
Romanian



English



Irish



Polish



Lithuanian



Other European



South American

Cherryfield: Religions



68.95% of Cherryfield's population identify as being Christian - slightly more than the Knowsley overall 66%. Knowsley has the highest proportion of people who identify as Christian in England & Wales.



25.59% of Cherryfield's population identify as having no religion. This group of people has increased the most since 2011 across Knowsley.



0.12% of Cherryfield's population identify as being Buddhist



4.46% of people did not provide an answer to this Census question

- [Cherryfield](#)
- [Population](#)
- [National Identity](#)
- [Religion](#)
- [Ethnicity](#)
- [Health](#)
- [Households](#)
- [Qualifications](#)
- [Work](#)

Cherryfield: Ethnicity



Since 2011, there has been an increase of 81% in the number of Knowsley residents from Asian, Black, Mixed or other ethnic groups

In Cherryfield:

- 96.1% of residents are from White ethnic groups
- 1.01% are from Asian, Asian British or Asian Welsh Backgrounds
- 1.01% are from Mixed or Multiple ethnic groups
- 0.76% are from Black, Black British, Black Welsh, Caribbean or African ethnic groups
- 0.54% are from Other ethnic groups.

- [Cherryfield](#)
- [Population](#)
- [National Identity](#)
- [Religion](#)
- [Ethnicity](#)
- [Health](#)
- [Households](#)
- [Qualifications](#)
- [Work](#)



Cherryfield :Health & Disability



- [Cherryfield](#)
- [Population](#)
- [National Identity](#)
- [Religion](#)
- [Ethnicity](#)
- [Health](#)
- [Households](#)
- [Qualifications](#)
- [Work](#)

76.49%

of Cherryfield residents describe their health as good or very good

9.18%

of Cherryfield residents describe their health as bad or very bad

23.64%

of Cherryfield residents describe themselves as being disabled

1,159

Cherryfield residents provide unpaid care, with 454 residents stating that they provide 50+ hours per week of unpaid care.

Cherryfield: Health & Disability

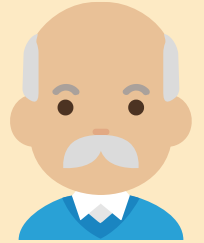


- [Cherryfield](#)
- [Population](#)
- [National Identity](#)
- [Religion](#)
- [Ethnicity](#)
- [Health](#)
- [Households](#)
- [Qualifications](#)
- [Work](#)

Life Expectancy in Cherryfield

79.1 years for women (83.2 years nationally)

76.7 years for men (79.5 years nationally)



Overall, residents in Cherryfield describe their health as being worse than national averages.

Health data shows us that there is higher prevalence of all cancers (especially lung cancer), heart disease and respiratory diseases.

Cherryfield: Households

4,622 households in Cherryfield



31% are one-person households



19% are three-person households



30% are two-person households

12% are four-person households
8% are five+ person households



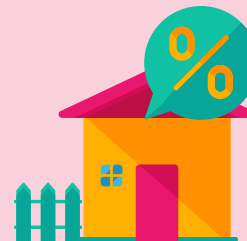
- [Cherryfield](#)
- [Population](#)
- [National Identity](#)
- [Religion](#)
- [Ethnicity](#)
- [Health](#)
- [Households](#)
- [Qualifications](#)
- [Work](#)

Cherryfield: Households

4,622 households in Cherryfield



57% are owned outright or with a mortgage



17% are privately rented



25% are social rented

Cherryfield has more homes that are social rented compared to national levels, (17% nationally) and fewer homes that are owned than national levels (62.5% nationally).

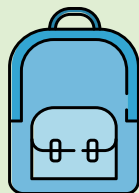
Average price of homes in Cherryfield in 2021 was £99,500 from an average of £24,950 in 2010. The cost of homes in Cherryfield have risen more slowly than other parts of Knowsley.

- [Cherryfield](#)
- [Population](#)
- [National Identity](#)
- [Religion](#)
- [Ethnicity](#)
- [Health](#)
- [Households](#)
- [Qualifications](#)
- [Work](#)

Cherryfield: Qualifications



- [Cherryfield](#)
- [Population](#)
- [National Identity](#)
- [Religion](#)
- [Ethnicity](#)
- [Health](#)
- [Households](#)
- [Qualifications](#)
- [Work](#)



30.16% of Cherryfield residents have no qualifications



11.5% have Level 1 qualifications

14.7% have Level 2 qualifications

16.51% have Level 3 qualifications



19.2% have level 4 qualifications or above

Nationally, Level 4 qualifications are the most common at 33.8% of residents. The second most common category was no qualifications at 18.2%

Cherryfield: Work



58% Economically
Active

of whom 5.36%
are unemployed



41% Economically
Inactive

Nationally:
57% of the population
are economically active

of whom
4.9%
are unemployed

39% are economically
inactive



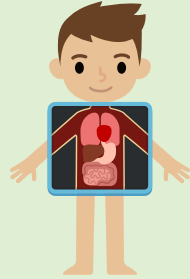
- Cherryfield
- [Population](#)
- [National Identity](#)
- [Religion](#)
- [Ethnicity](#)
- [Health](#)
- [Households](#)
- [Qualifications](#)
- [Work](#)

Cherryfield: Work

Top 5 Industries for Cherryfield Residents



- [Cherryfield](#)
- [Population](#)
- [National Identity](#)
- [Religion](#)
- [Ethnicity](#)
- [Health](#)
- [Households](#)
- [Qualifications](#)
- [Work](#)



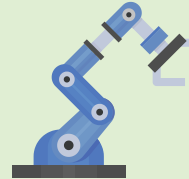
869 residents work in human health & social work activities



831 residents work in wholesale & retail trade



486 residents work in construction



410 residents work in manufacturing



380 residents work in transport & storage

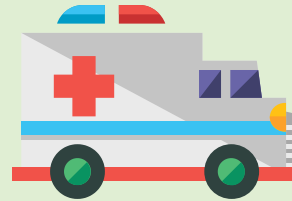
Cherryfield: Work

3,478 (41%) of residents are economically inactive

Top 4 reasons for being economically inactive:



43.7% are retired



22.83% are long-term sick or disabled



9.95% are students



13.23% looking after family or home



- [Cherryfield](#)
- [Population](#)
- [National Identity](#)
- [Religion](#)
- [Ethnicity](#)
- [Health](#)
- [Households](#)
- [Qualifications](#)
- [Work](#)

For more information on Knowsley please visit
Knowsley Knowledge website

