



Knowsley Council

Local Highway Infrastructure

Upgrade Programme

Junction 4 of the M57 motorway,
Moorgate Road and the East Lancashire Road (A580)



Funded by
UK Government



LIVERPOOL
CITY REGION
COMBINED AUTHORITY

METROMAYOR
LIVERPOOL CITY REGION



Our plan...

This scheme will deliver Active Travel and capacity improvements at Junction 4 of the M57 motorway, Moorgate Road and the East Lancashire Road (A580) providing a fit for purpose, high-quality, resilient network fit for the future.

Upgrades to the current network will see improved facilities for non-motorised users to improve local connectivity, addressing road safety issues for all modes of transport.

All works will involve resurfacing, drainage and street lighting improvements where appropriate.

Works will include:

- Improvements at the junction of Moorgate Road and East Lancashire Road (A580). New, separate cycle crossings will be built to improve the safety of cyclists whilst making their journey through the junction quicker and more efficient.
- A reduction in the speed limit of the East Lancashire Road from 50mph to 40mph between Alchemy Way and the boundary with Liverpool.
- Improvements for cyclists and pedestrians at Ribblers Lane making it safer and easier to join up to existing cycle routes.
- Carriageway widening to create extra lanes and increase capacity at both junctions.
- Adding new traffic signals to the Junction 4 of the M57 and upgrading the existing signals at Moorgate Road Junction East Lancashire Road (A580).

What we are proposing...

Phase One

Widening of the carriageway of Moorgate Road South

The approach to the junction with the East Lancashire Road will be widened to create an additional straight on lane through to Moorgate Road North. The existing left-hand turn onto the East Lancashire Road will be restricted.

The existing traffic signal arrangement will be improved to assist the traffic flow.

Speed on green/Red Light traffic cameras

These cameras are to be installed at the junction of East Lancs Road/ Moorgate Road and the junction of East Lancs Road/Coopers Lane, they are similar to regular speed cameras but also detect when a motorist goes through a red traffic signal. Having these measures in place will reduce the amount of motorists speeding and going through red signals, which will improve the overall safety of the junction.



Improvements at the junction of Moorgate Road and East Lancashire road (A580)

Separate cycle crossings will be built to improve the safety and the efficiency of movement for cyclists travelling through the junction. New traffic signals will mean that cyclists will be able to cross Moorgate Road South and the East Lancashire Road in one continuous movement.



Pedestrian and Cyclist Improvements to Ribblers Lane North

Narrowing of the carriageway and introducing a pedestrian crossing facility on Ribblers Lane will reduce vehicle speeds and improve visibility in both directions. The remarking of the on-road cycleway on Ribblers Lane South will provide links to the National Cycle Network (route NCN 862).



Widening of the footway next to the westbound East Lancashire Road carriageway over Knowsley Brook

The Westbound footway on East Lancashire Road carriageway over Knowsley Brook will be widened to create a shared use footway/cycleway. This will result in the East Lancashire Road being reduced from three lanes to two lanes for a short section.



Speed Limits

A reduction in the speed limit of the East Lancashire Road from 50mph to 40mph between Alchemy Way and the boundary with Liverpool.



Phase Two

To widen the Moorgate Road South approach to the M57 Junction 4 to create an additional lane on the roundabout.

The carriageway will be widened to increase the capacity on the approach to junction 4. This will also involve some landscaping works in the central reservation as well as improved direction signage.



The full signalisation of the M57 Junction 4

On the approach arms to the roundabout we will be installing new traffic signals, this will improve traffic flows entering the roundabout at peak times and throughout the day.



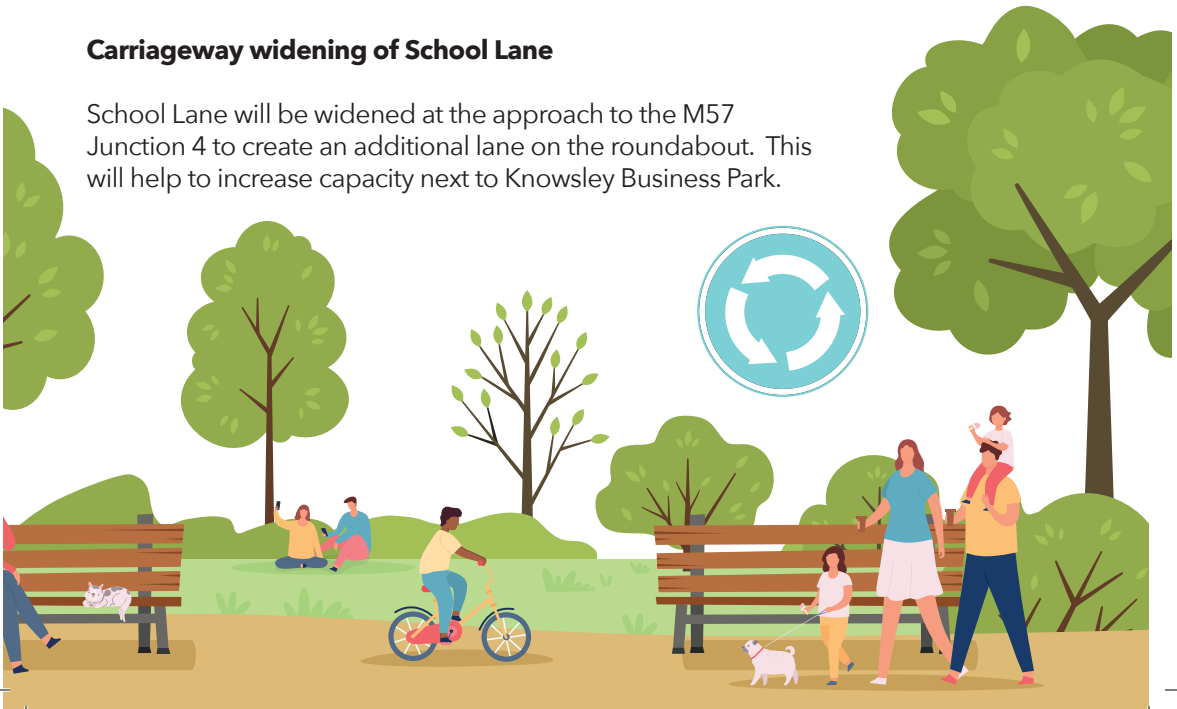
Widening of the circulatory carriageway of Junction 4 (roundabout)

The roundabout will be widened to complement the additional lanes on School Lane and Moorgate Road increasing capacity and reducing journey times for vehicles.

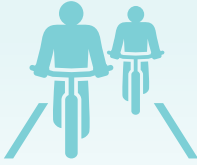


Carriageway widening of School Lane

School Lane will be widened at the approach to the M57 Junction 4 to create an additional lane on the roundabout. This will help to increase capacity next to Knowsley Business Park.



Key Benefits



Active travel options will be improved as cyclists will have a clear and efficient route that is separate from motorists.



The proposals will also improve conditions for pedestrians on associated roads, increasing safety for the most vulnerable road users.



The improvements will help to relieve a concentration of pinch point issues at these junctions and the connecting roads.



By increasing capacity this will reduce congestion meaning road users will travel through these junctions with less waiting times.



The scheme will directly address current and future environmental issues by providing capacity improvements, therefore reducing the congestion which increases vehicle emissions.

Phase One

ON CARRIAGEWAY CYCLEROUTE
ON OLD FARM ROAD

CENTRAL RESERVE WIDENED TO PROVIDE
UNCONTROLLED PEDESTRIAN CROSSING

FOOTWAY BUILD-OUT TO IMPROVE VISIBILITY

CYCLEWAY TRANSITIONS TO ON ROAD
NATIONAL CYCLE ROUTE

FOOTWAY WIDENED TO PROVIDE SEGREGATED
CYCLEWAY / FOOTWAY







BUS STOP LAYBY AMEND

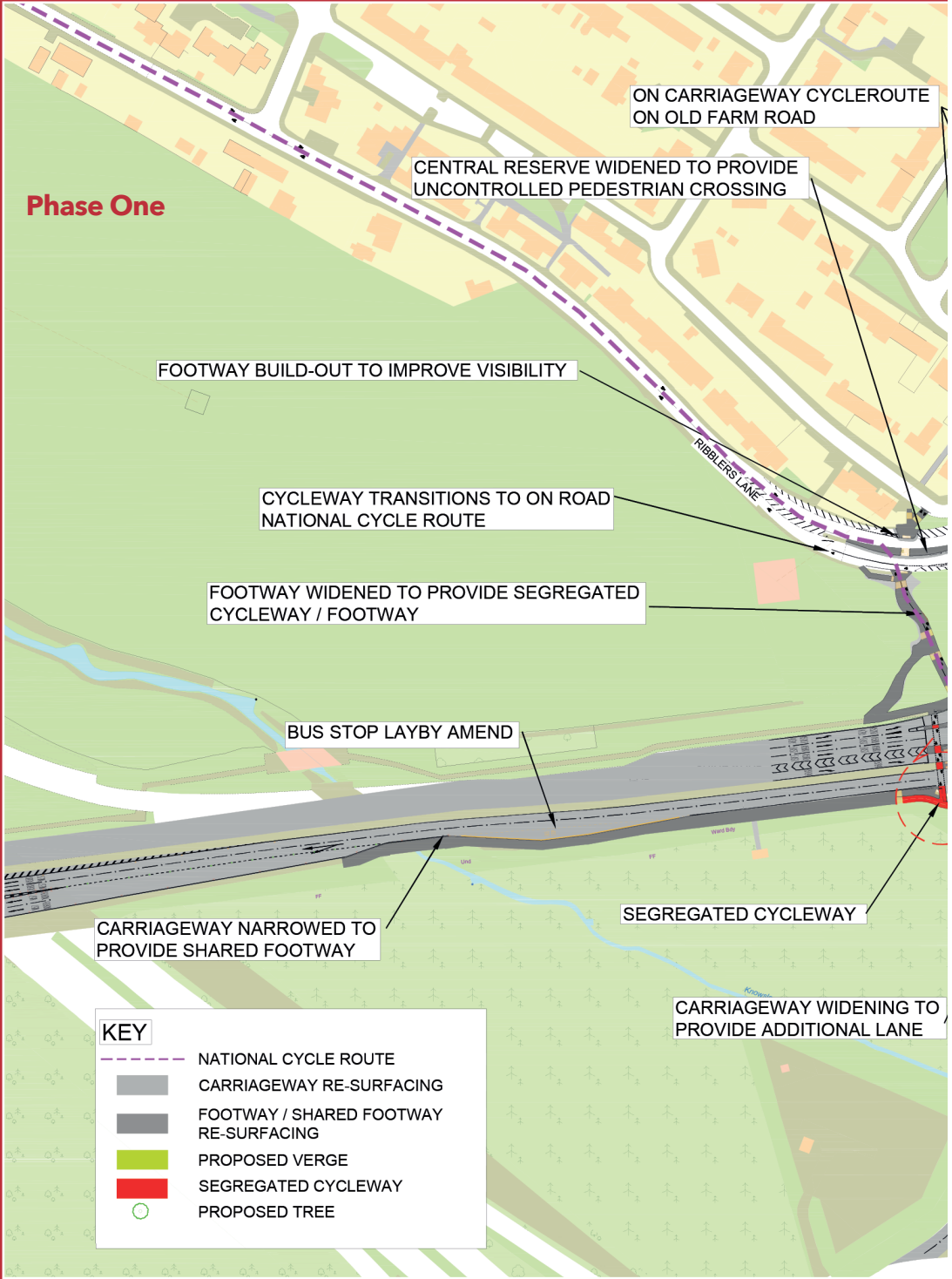
CARRIAGEWAY NARROWED TO
PROVIDE SHARED FOOTWAY

SEGREGATED CYCLEWAY

CARRIAGEWAY WIDENING TO
PROVIDE ADDITIONAL LANE

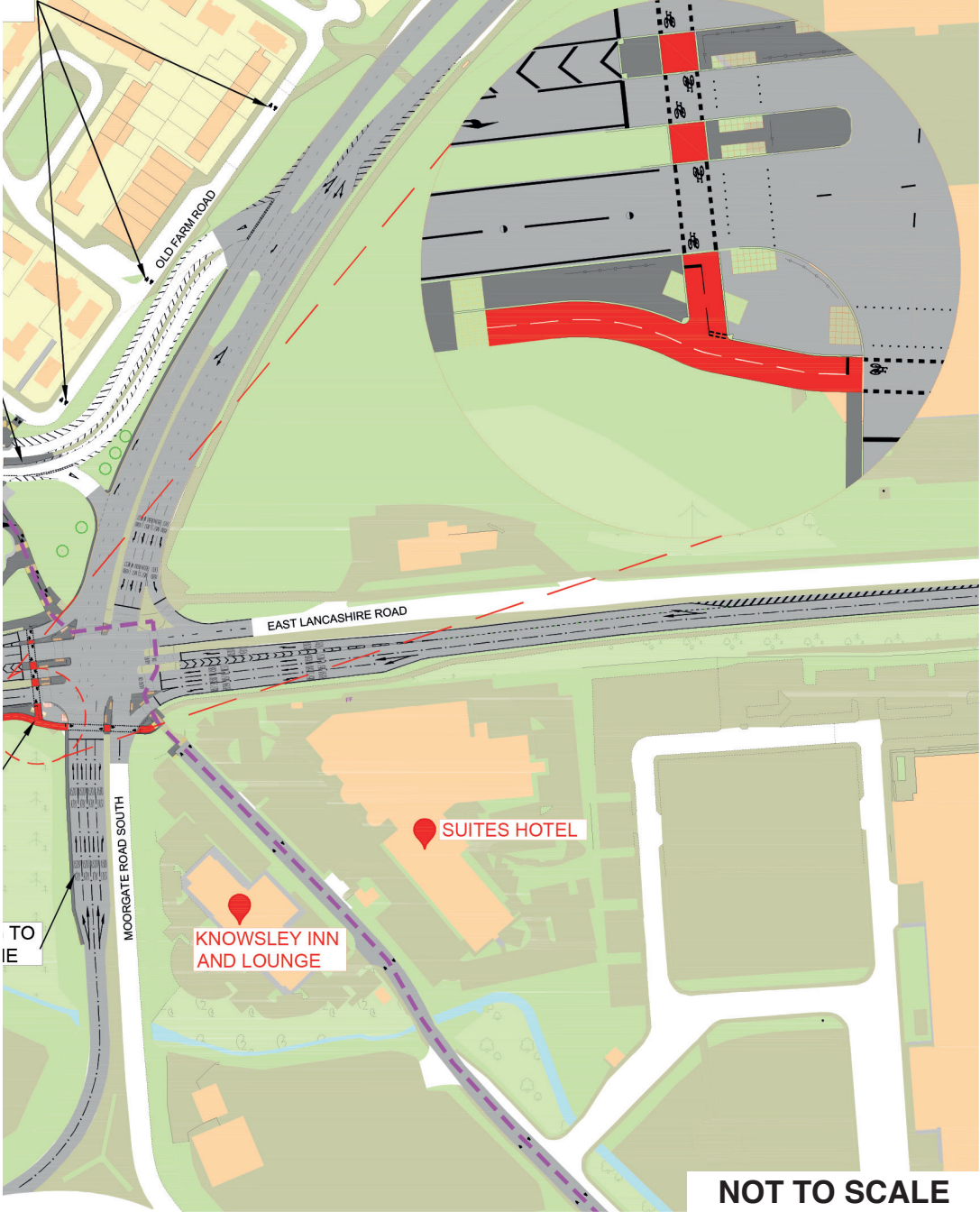
KEY

-  NATIONAL CYCLE ROUTE
-  CARRIAGEWAY RE-SURFACING
-  FOOTWAY / SHARED FOOTWAY RE-SURFACING
-  PROPOSED VERGE
-  SEGREGATED CYCLEWAY
-  PROPOSED TREE





TE



TO
IE

KNOWSLEY INN
AND LOUNGE

SUITES HOTEL

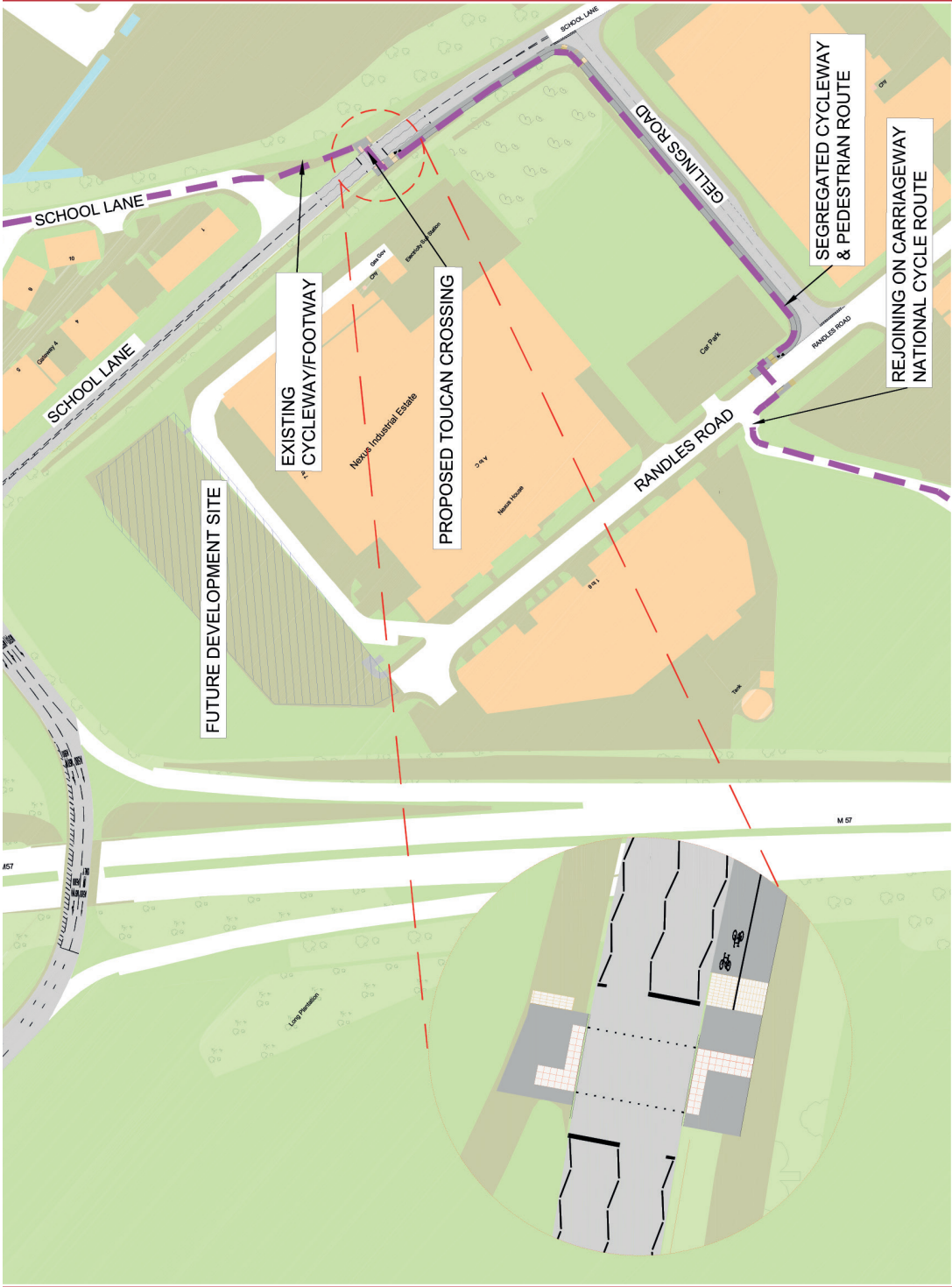
NOT TO SCALE

Phase Two



KEY

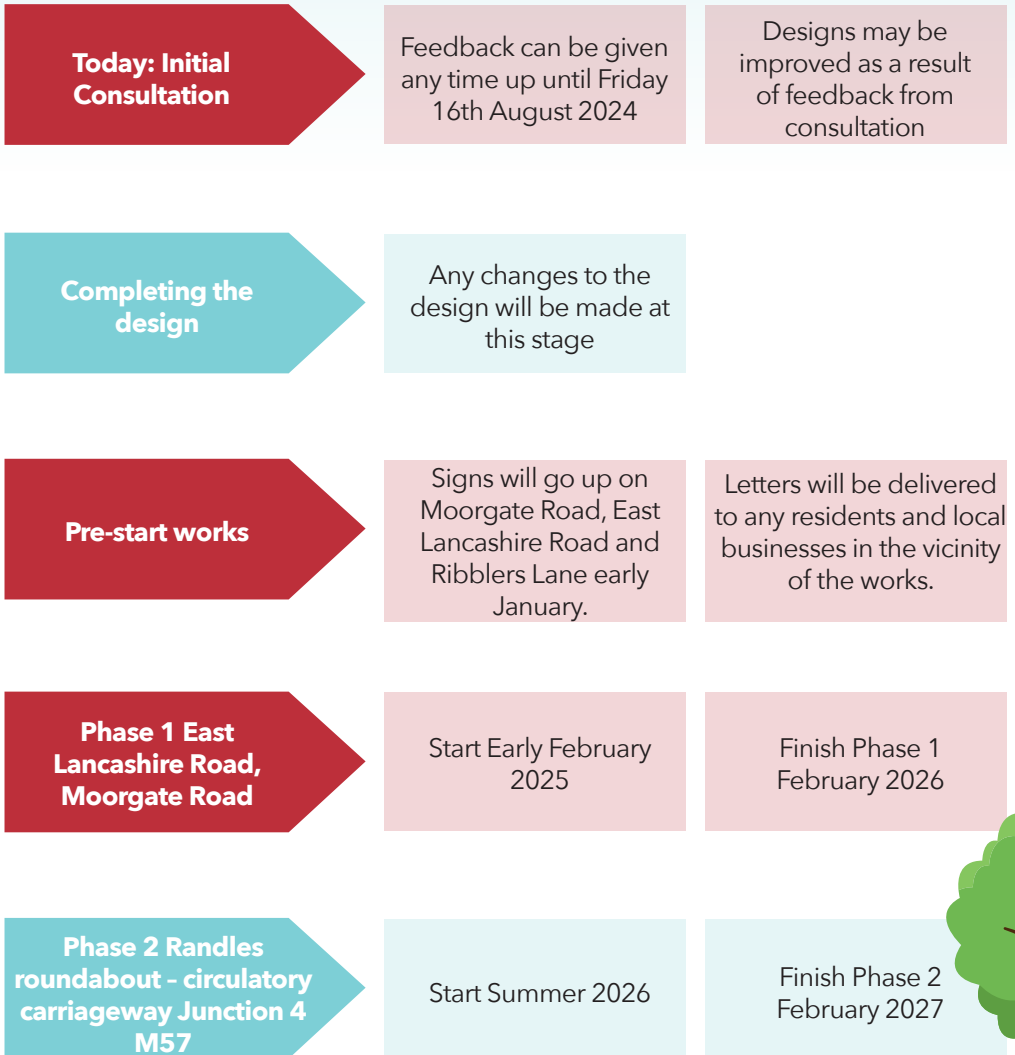
- CARRIAGEWAY RE-SURFACING
- FOOTWAY / SHARED FOOTWAY RE-SURFACING
- PROPOSED TRAFFIC SIGNALS
- NATIONAL CYCLE ROUTE



Outline programme

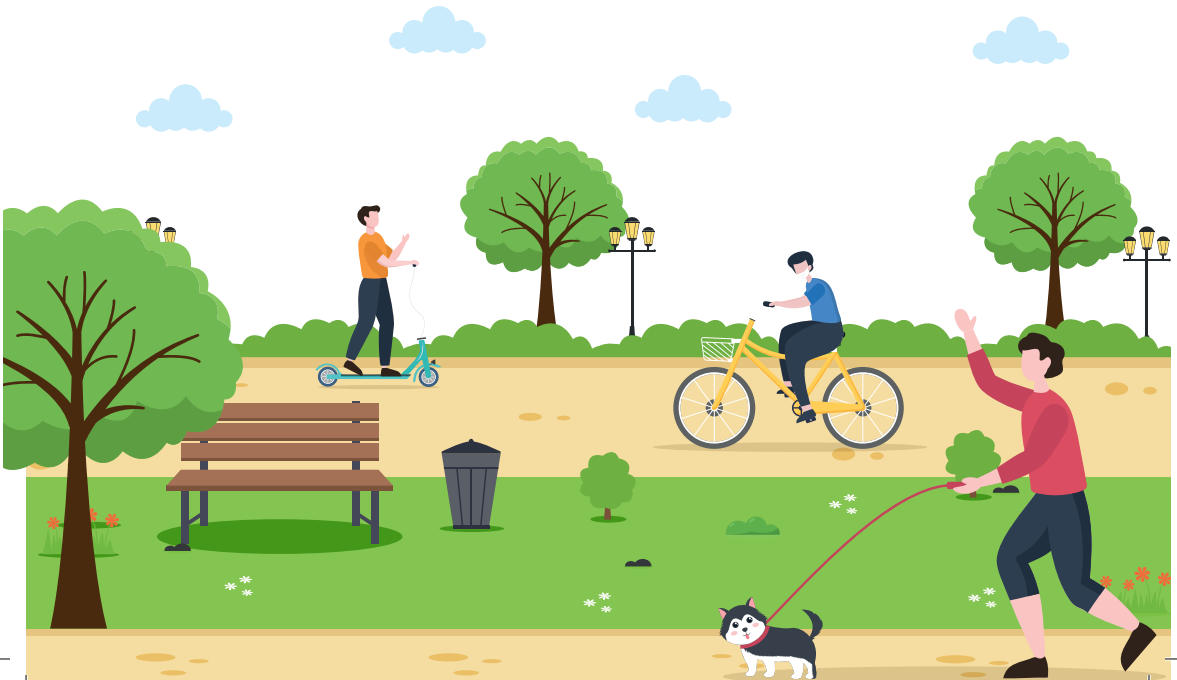
Construction works can be delayed due to changes in the weather, ground conditions or technical difficulties. However, the programme below is how we expect to proceed.

You can contact us at any time during the design and construction process.



“ Knowsley Council are looking to encourage more and more people to make those shorter journeys by bike or on foot. Give people the means to do it and they will join in. Once complete the scheme will help all road users, making cyclists and pedestrians safer and so freeing up more space on the roads for people doing longer journeys by car. We must rethink how we get about for the sake of us all and this scheme will be another high quality piece of the emerging region wide network. That’s why it gets my wholehearted support. ”

Simon O’Brien,
Liverpool City Region Cycling and Walking Commissioner.



Contact Us

You can provide feedback via post, email or via our website. We won't be collecting your personal information as part of this consultation, you don't need to provide a name or contact details with your feedback.

Knowsley Council,
Stretton Way Depot,
Stretton Way,
Huyton,
Knowsley

Email: [**highway.consultations@knowsley.gov.uk**](mailto:highway.consultations@knowsley.gov.uk)

Web: [**www.knowsley.gov.uk/council-and-elections/consultations**](http://www.knowsley.gov.uk/council-and-elections/consultations)

If you would like to learn more about the active travel routes, cycling or walking groups available in Knowsley please visit our 'Getting Around Knowsley' page [Getting around in Knowsley | Knowsley Council](#).

