

SEND

Newsletter

**SPECIAL
EDUCATIONAL
NEEDS AND
DISABILITY
0-25^{IN}
KNOWSLEY**

ISSUE 12 APRIL 2020

CORONAVIRUS SPECIAL UPDATE - APRIL 2020 REVIEWS AND ASSESSMENTS

In Knowsley our SEND services continue to run and we have been keen to try and minimise disruption to children, young people and families.

Although Schools have closed and been replaced with emergency child care provision, we continue to receive requests to consider whether a child or young person requires an Education, Health and Care (EHC) needs assessment. Where possible we are considering this via remote technology, phone consultation and discussions with parents/carers, schools and professionals about timeframes and meeting our legal duties. IPSEA have produced detailed guidance around SEND and the law, all of which applies to us at Knowsley, and this can be found here - <https://www.ipsea.org.uk/news/ipsea-update-on-covid-19-school-closures-and-sen-provision>

We continue to work with school and settings to carry out EHCP annual reviews exploring remote technology and other means to complete this.

We do know that as the current government guidance remains in place the ability to seek professional advice for plans may become more difficult and this may impact our ability to progress assessments and reviews and we are committed to keeping parents/carers informed where there may be delays relating to assessment or provision for your child.

SCHOOL CONTACT

All schools in our area are being contacted on a daily basis by staff from Knowsley Council who are sharing resources, guidance and other matters which keeps everyone informed and updated on progress.

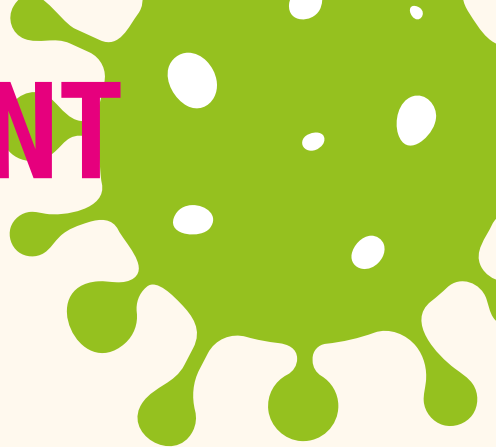
Our schools are communicating with parents and young people via their IT systems and also providing workpacks or resources for their pupils. If you need support with resources or have any issues with communication, please contact your child's school in the first instance.

KNOWSLEY PARENT CARER VOICE

The Knowsley Parent Carer Voice is also active in sharing resources and updates. They can be contacted via email infokpcv@gmail.com or phone **07376233141**.



NEURODEVELOPMENT ASSESSMENT SERVICE



The Knowsley Children and Young People Neurodevelopment Assessment Service (Pathway) remains open for new referrals and all referrals are being triaged. There is a temporary change in how to contact the service during the Coronavirus period. The current parent helpline will be closed for the foreseeable future and the enquiries helpline is now **0151 244 4387**.

During the Coronavirus period, the service is not offering face-to-face assessments. This is in line with NHSE guidance for services that are deemed as not critical and this measure has been taken to protect both children and staff. Where it is possible, the service is continuing to offer assessments using digital technology.

Currently all of NHS Knowsley Clinical Commissioning Group's commissioned services are adapting as Coronavirus impacts. Inevitably this means that resources are focused on those children who are experiencing a crisis and are in need of urgent support.

KNOWSLEY PARENT CARER VOICE UPDATE

Knowsley Parent Carer Voice are currently running Knowsley Covid-19 Mutual Aid Facebook page alongside KDC and wish to thank Andy Gilbert for giving us this opportunity. There are now over 1500 members, it is an invaluable resource for the community.

Alongside that we have been working with Knowsley Council on a number of issues parent carers have raised, we are also staffing two of our own online support groups and regularly updating the KPCV Facebook page with all Knowsley news, advice and support details.



And finally . . .

We appreciate that this is concerning and anxious time for everyone, but there is lots of help and support available to you and your family as we are advised to stay at home. Visit www.knowsleynews.co.uk for the latest service updates including Free School Meals and how to access them, help and advice on mental health support as well as tips for families during the current lockdown period.

VIRTUAL ONLINE SESSIONS

In partnership with Knowsley SENDIASS and KPCV, the council has arranged weekly online sessions for parents / carers. These sessions are attended by representatives from Knowsley Council and provide an opportunity for parents/carers to ask questions or simply take the opportunity to catch up with other parents / carers.

These sessions will be held at different times each week as we are aware that different families have different responsibilities and demands throughout the week.

See Knowsley SENDIASS and KPCV social media sites for information each week.